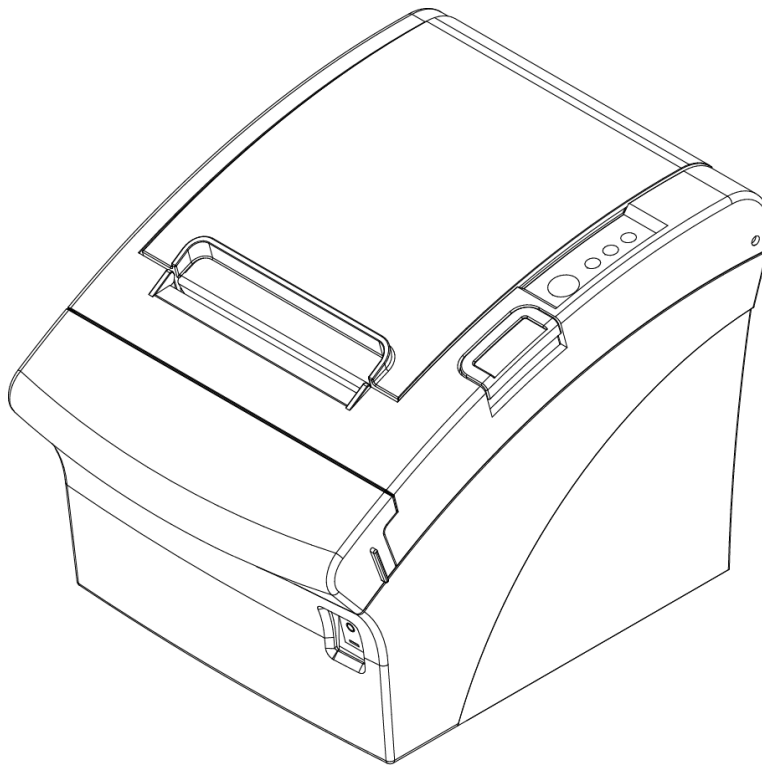


METAPACE

Windows Driver Manual **Metapace T-3II**

Thermal Printer
Rev. 1.01



<http://www.metapace.com>

■ Table of Contents

1. About this Manual	3
2. OS Environment.....	3
3. Windows Driver Preparation	3
4. Windows Driver Installation	4
4-1 Installing on Windows XP / Server 2003	4
4-1-1 Via Serial Port or Parallel Port	4
4-1-2 Via USB Port	7
4-1-3 Via Ethernet / Wireless LAN	11
4-2 Installing on Windows VISTA / Server 2008 / 7 / 8.....	14
4-2-1 Via Serial Port or Parallel Port	14
4-2-2 Via USB Port	17
4-2-3 Via Ethernet / Wireless LAN Port.....	20
5. Detailed Settings of Windows Driver	23
5-1 Paper feed option	23
5-2 Paper size.....	25
5-3 NV Image / Commands	26
5-4 Crop / Macro.....	28
5-5 Barcodes	34
5-6 Cut / Cash Drawer	37
5-7 Image Rotation	38
5-8 Utilities	39
5-8-1 New Paper Size.....	40
5-8-2 Unified POS Utility	41
5-8-3 Extended Special Functions	41
5-8-4 Journal Viewer.....	42
6. Windows Driver Specifications.....	44
6-1 Font	44
6-2 Special functions.....	46
6-2-1 Using Special Font Edit Utility.....	48
7. Windows Driver Application	50
7-1 Application with Visual Basic.....	50
7-1-1 Windows driver selection.....	50
7-1-2 Text printing	51
7-1-3 Barcode printing	51
7-1-4 2-D barcode printing	51
7-2 Application with WordPad	52
7-2-1 WordPad environment setting	52
7-2-2 Text printing	52

1. About this Manual

This Windows Driver Installation Manual provides information on installation, detailed specifications, and usage of the printer's Windows Driver according to PC operating system (OS).

Metapace makes continual efforts to improve the functions and quality of the products. The specifications and contents of the manual are subject to change without prior notice for this reason.

2. OS Environment

The following operating systems are supported by this Windows driver.

- Microsoft Windows XP (32bit/64bit)
- Microsoft Windows Server 2003 (32bit/64bit)
- Microsoft Windows Embedded For Point Of Service
- Microsoft Windows Embedded POS Ready 2009
- Microsoft Windows Vista (32bit/64bit)
- Microsoft Windows Server 2008 (32bit/64bit)
- Microsoft Windows Server 2008R2 (64bit)
- Microsoft Windows 7 (32bit/64bit)
- Microsoft Windows 8 (32bit/64bit)

3. Windows Driver Preparation

Windows driver is included in the CD that is shipped with the product, and the latest version can be downloaded from the home page of Metapace. (www.metapace.com)

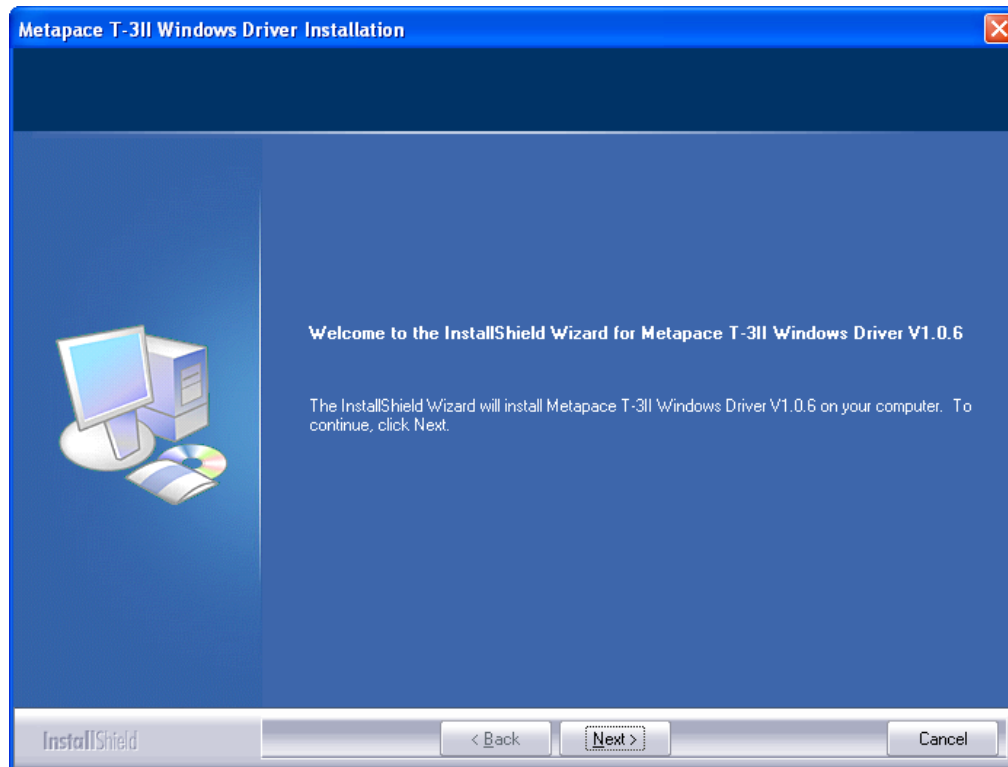
If using the enclosed CD, click the "Windows Driver" button to find and run the Windows Driver installation file.

4. Windows Driver Installation

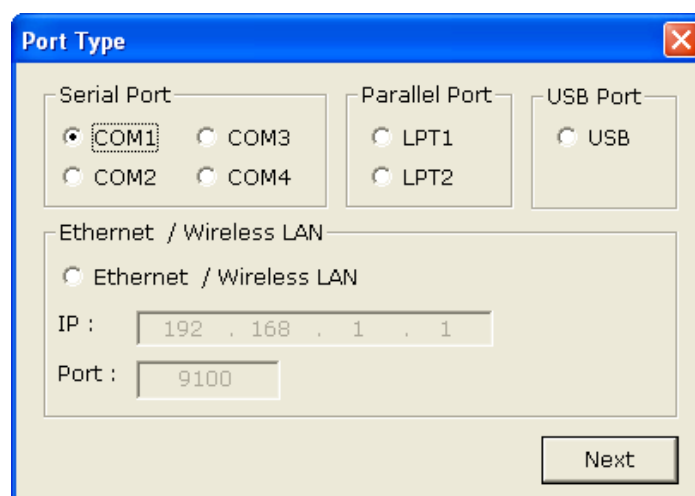
4-1 Installing on Windows XP / Server 2003

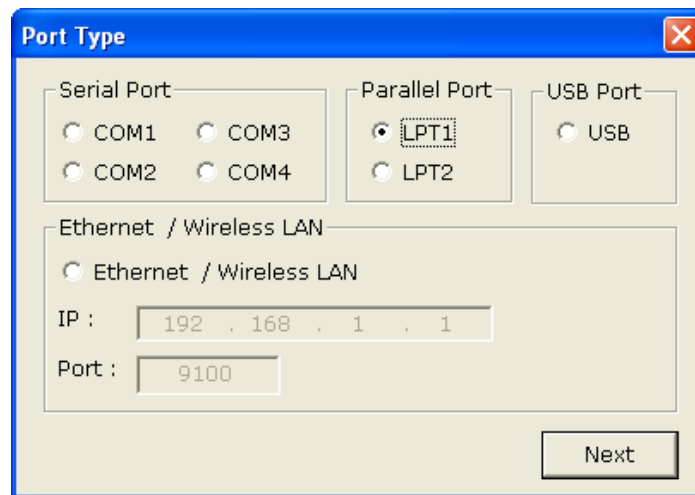
4-1-1 Via Serial Port or Parallel Port

- 1) Double-click the Windows Driver installation file.
- 2) Click "Next".



- 3) Select a COM port or LPT port to be used and then click "Next".

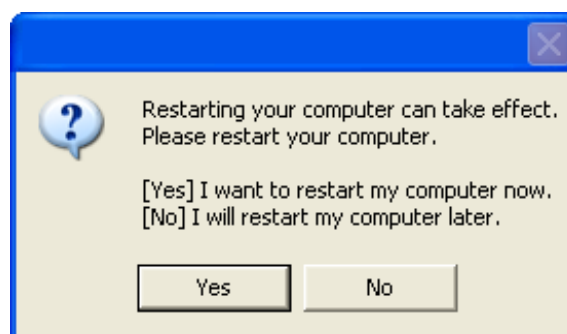




4) When the following message box appears, click “Continue Anyway”.



5) Click “Yes” to reboot the PC.



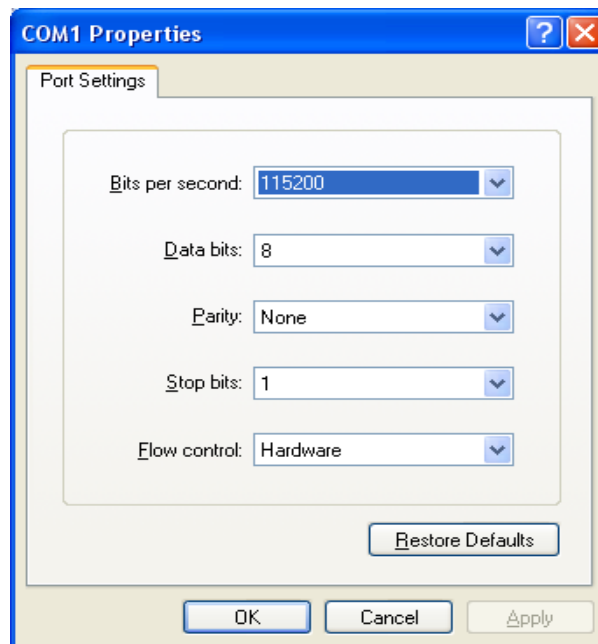
6) Open the printer properties window in the Windows OS.

※ Control Panel – Printers and Faxes.

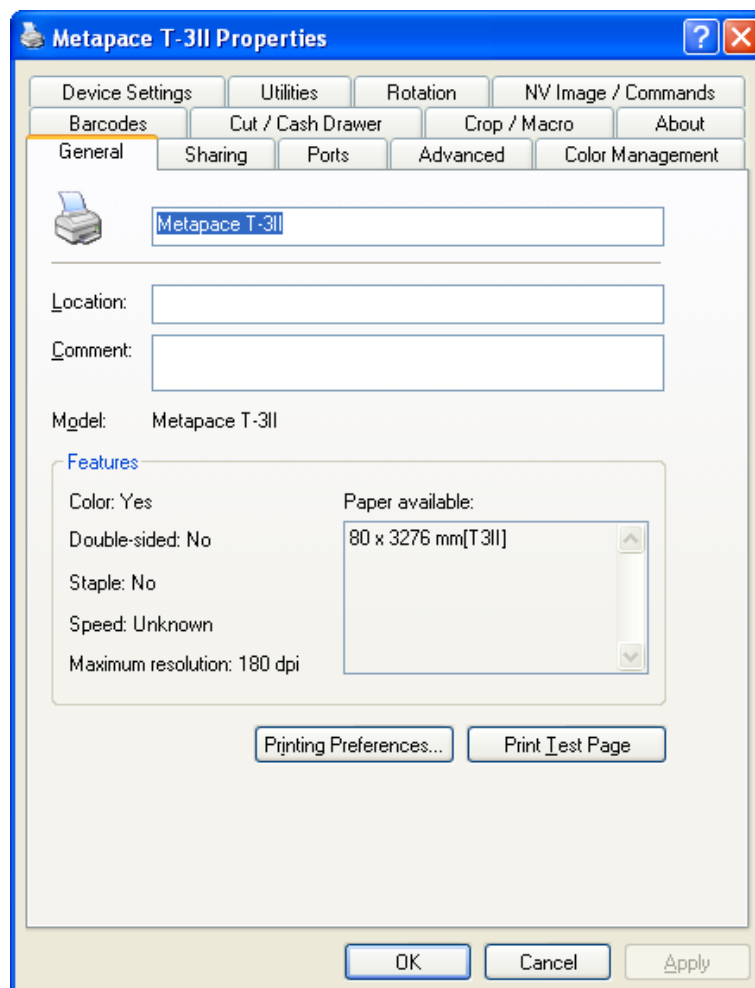
7) In the “Ports” tab, click “Configure Port...”

※ Pass this step if you are using a parallel port.

- 8) Match the communication settings to those of the printer. The communication settings of the printer can be performed by conducting a self-test.
- ※ Pass this step if you are using a parallel port.

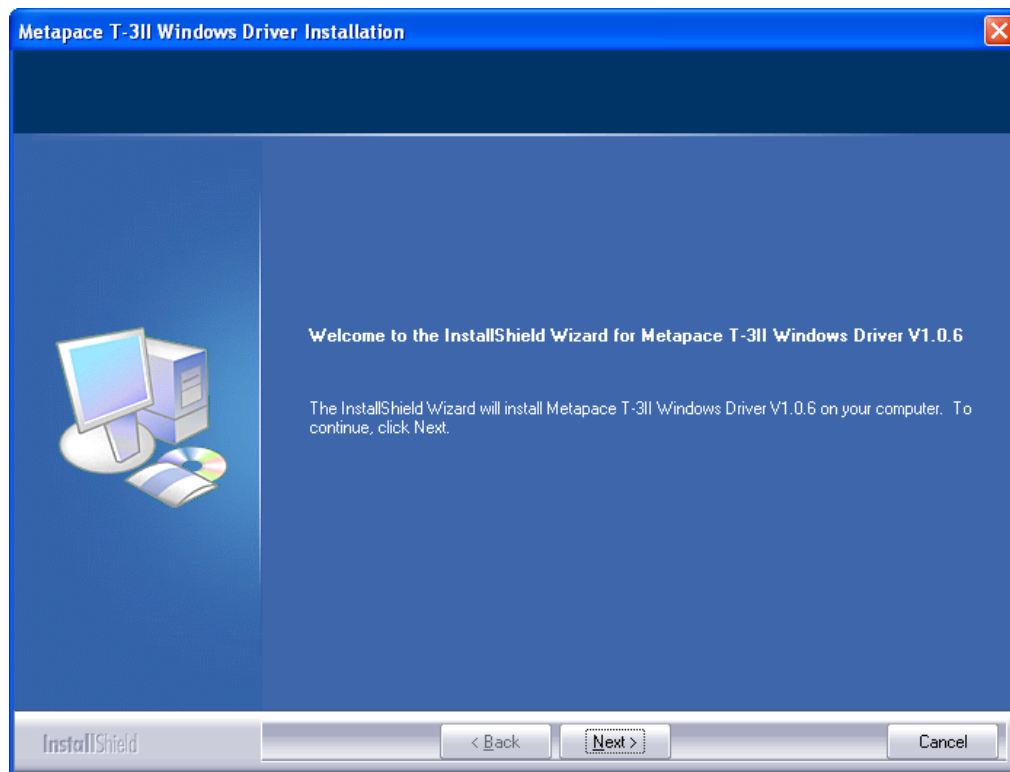


- 9) Click "Print Test Page" and check printing status. Proper installation of the driver is indicated if the test page is printed normally.

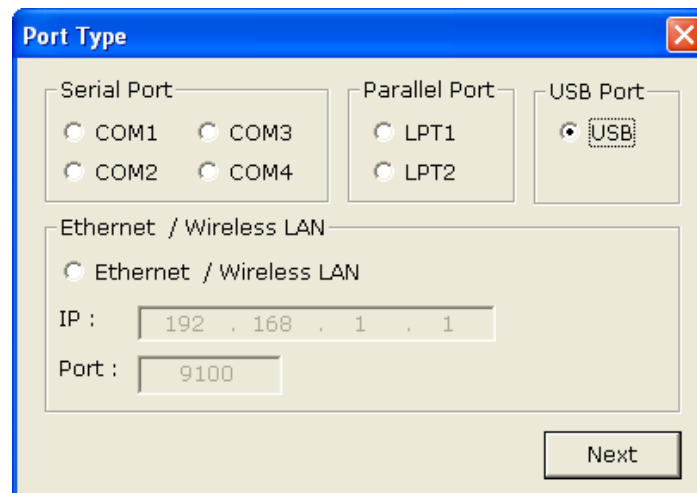


4-1-2 Via USB Port

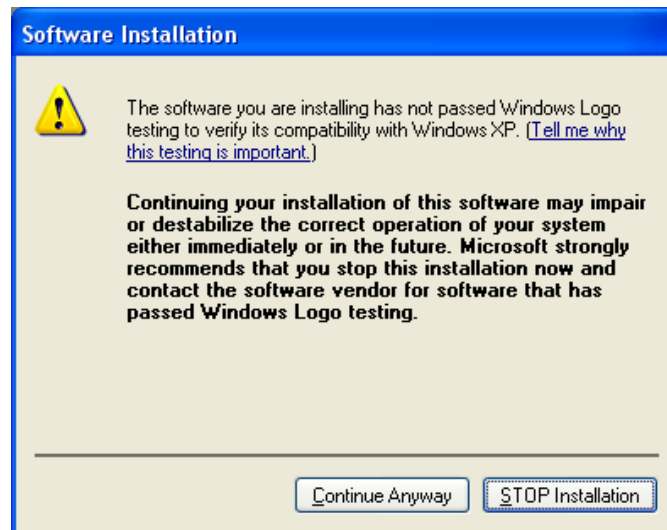
- 1) Double-click the Windows Driver installation file.
- 2) Click “Next”.



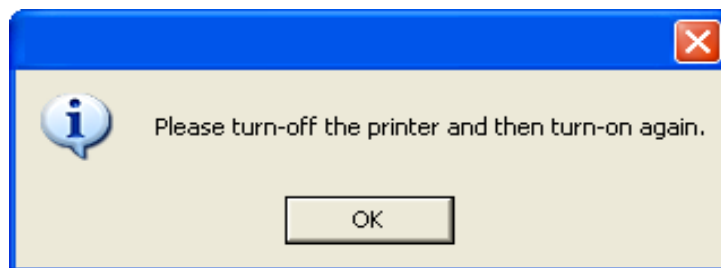
- 3) Select “USB” and then click “Next”.



4) When the following message box appears, click “Continue Anyway”.



5) Click “OK”.

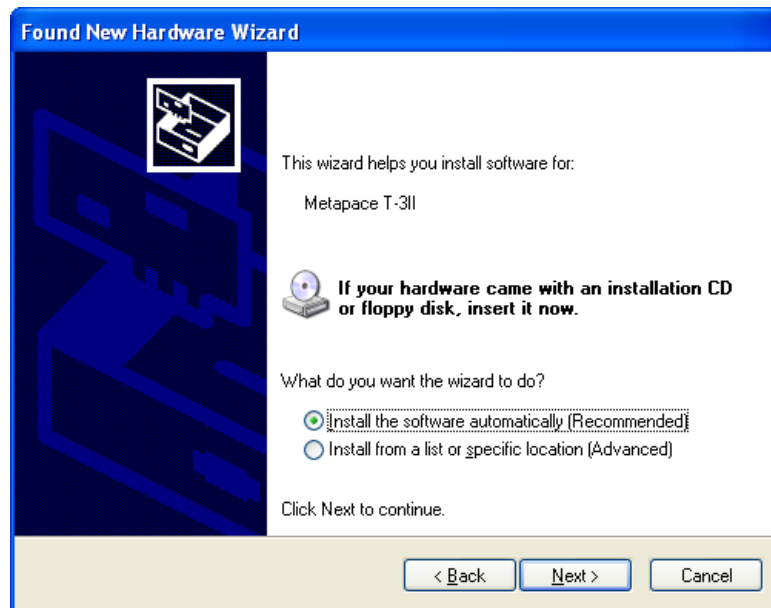


6) Turn off the printer and then turn it on.

7) When the New Hardware Wizard appears for the installation of the Windows Driver, select the option as shown below and click “Next”.



8) Click "Next".



9) When the following message box appears, click "Continue Anyway".



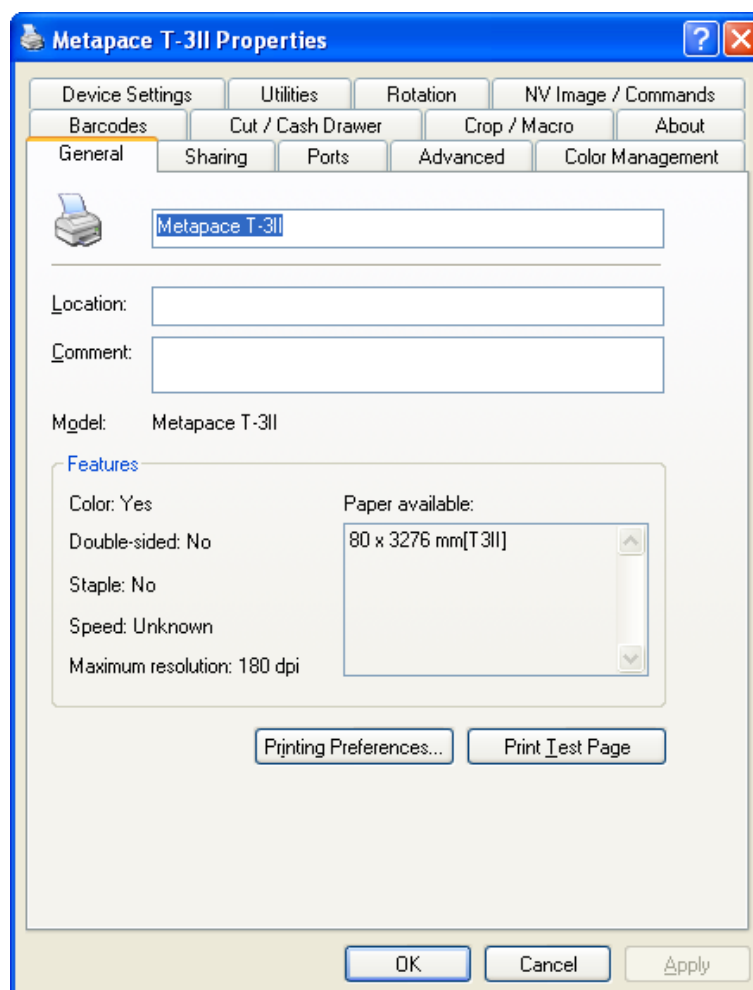
10) Click “Finish”.



11) Open the printer properties window in the Windows OS.

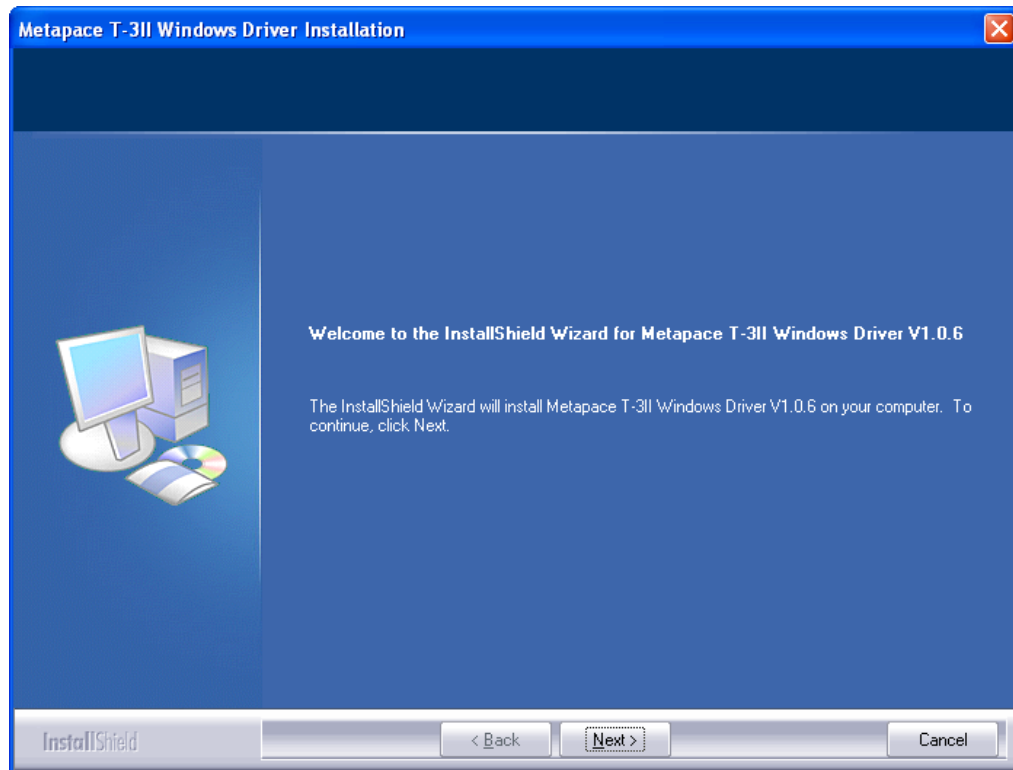
※ Control Panel – Printers and Faxes.

12) Click “Print Test Page” and check printing status. Proper installation of the driver is indicated if the test page is printed normally.

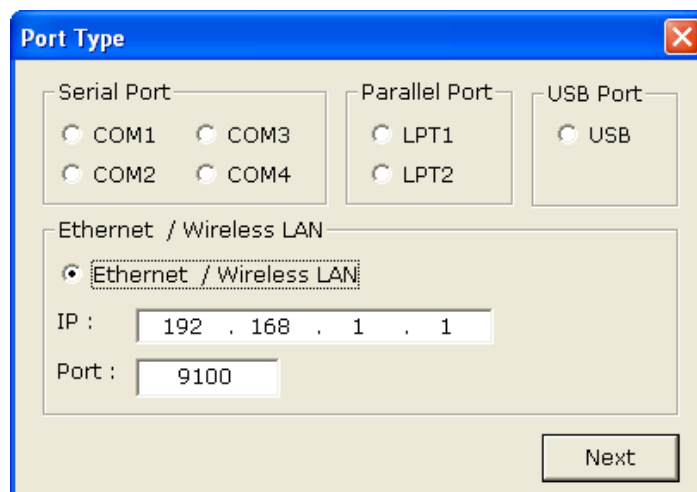


4-1-3 Via Ethernet / Wireless LAN

- 1) Double-click the Windows Driver installation file.
- 2) Click “Next”.



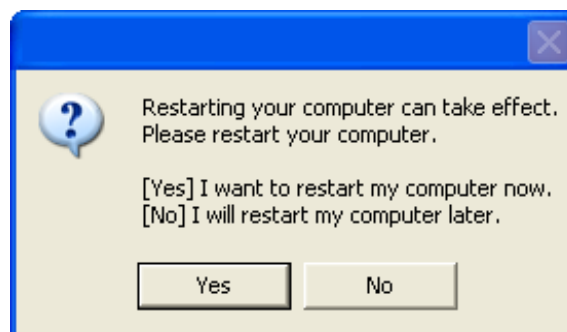
- 3) Select “Ethernet / Wireless LAN”.
- 4) Enter the IP address and port number, and then click “Next”.



5) When the following message box appears, click “Continue Anyway”.



6) Click “Yes” to reboot the PC.

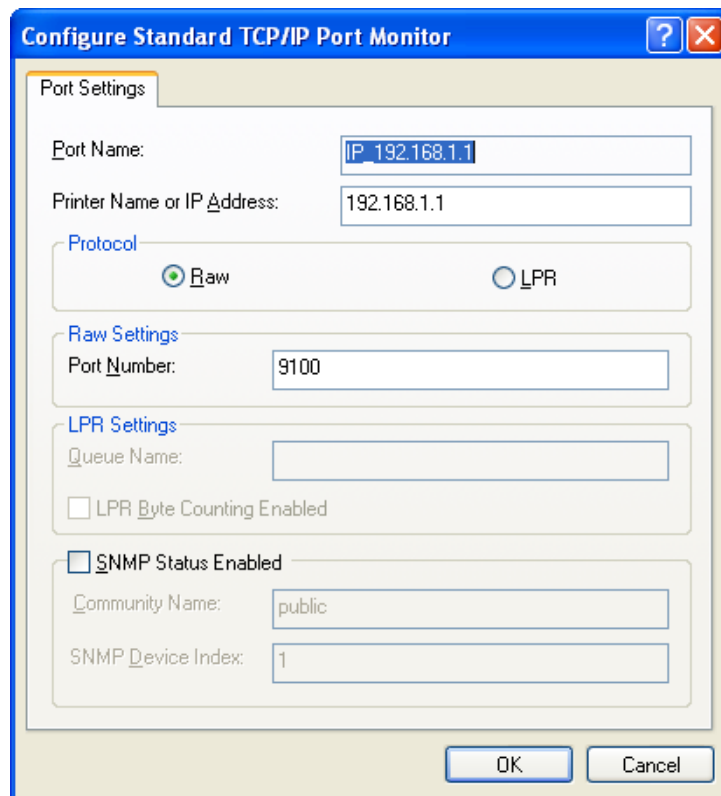


7) Open the printer properties window in the Windows OS.

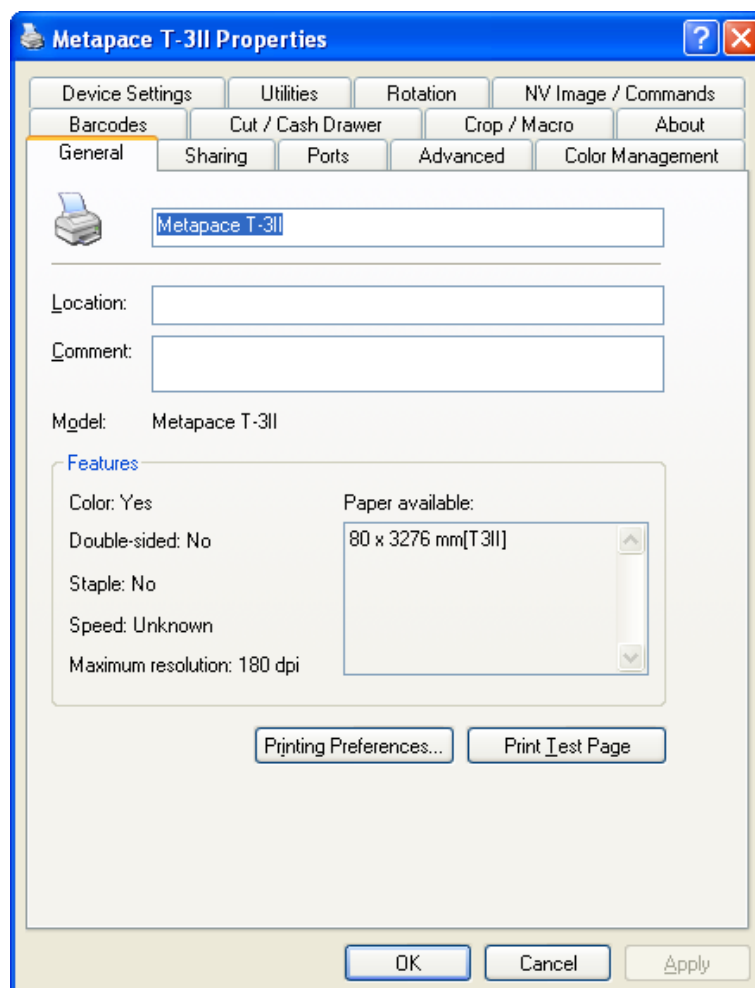
※ Control Panel – Printers and Faxes.

8) In the Ports tab, click “Configure Port...”.

9) Match the communication settings to those of the printer.



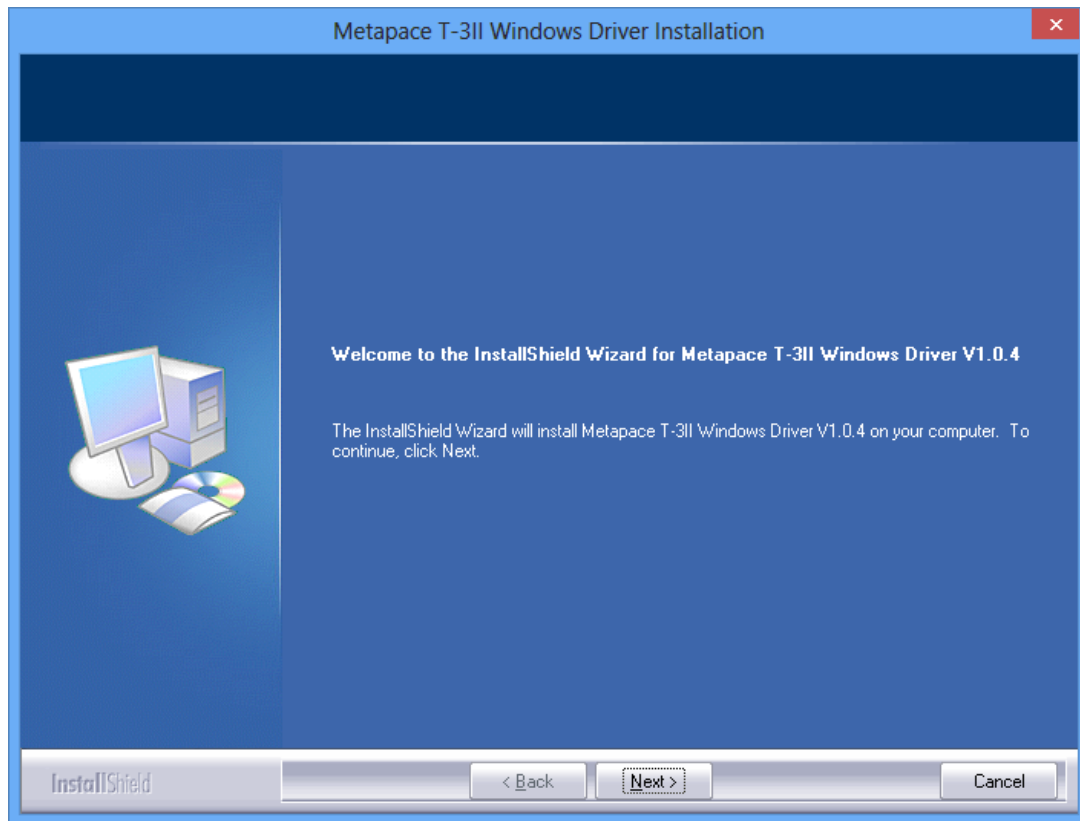
- 10) Click “Print Test Page” and check printing status. Proper installation of the driver is indicated if the test page is printed normally.



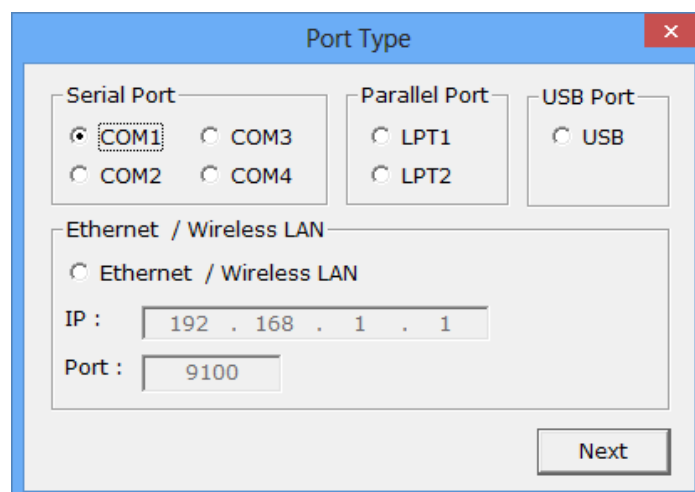
4-2 Installing on Windows VISTA / Server 2008 / 7 / 8

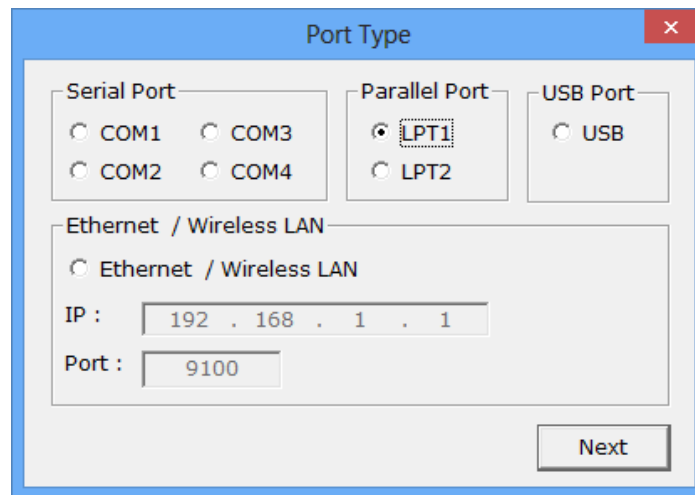
4-2-1 Via Serial Port or Parallel Port

- 1) Double-click the Windows Driver installation file.
- 2) Click "Next".

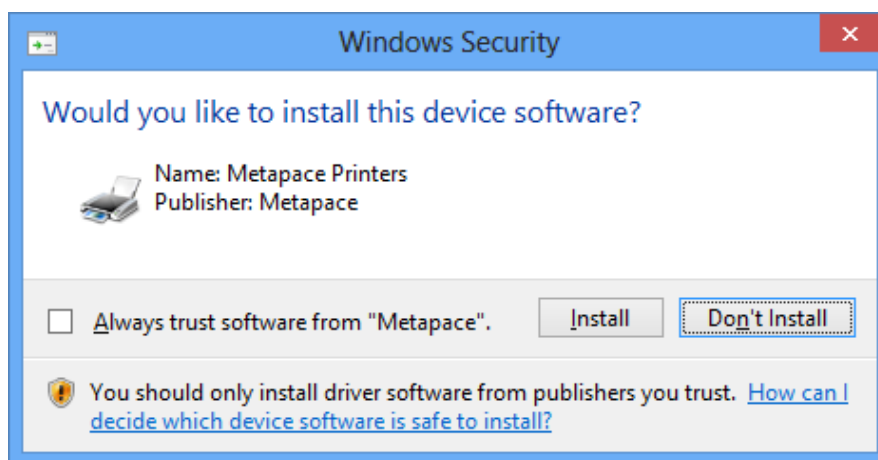


- 3) Select a COM port or LPT port to be used and then click "Next".

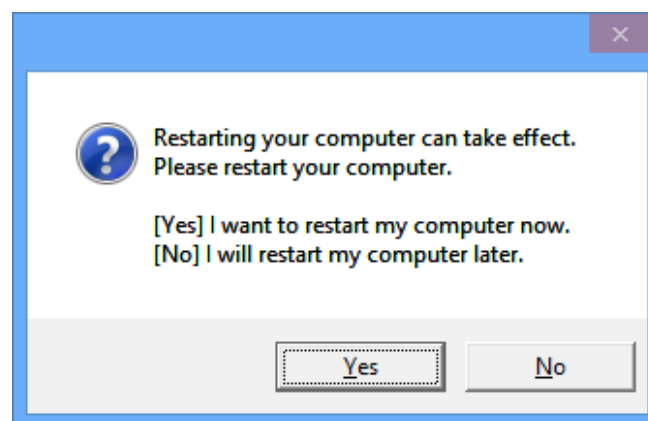




4) When the following message box appears, click “Install”.



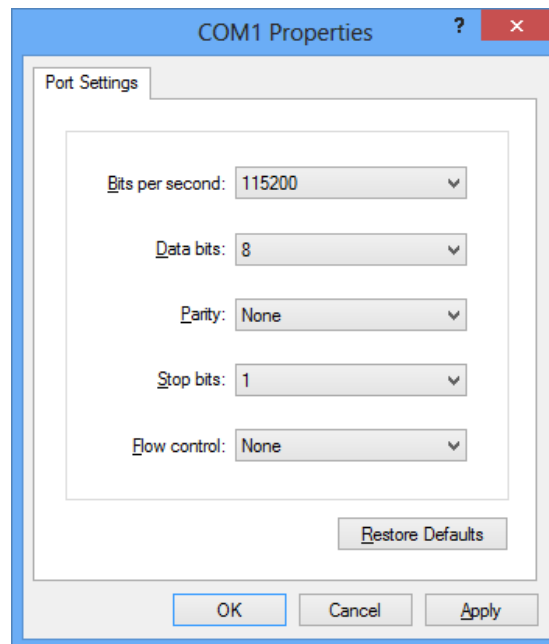
5) Click “Yes” to reboot the PC.



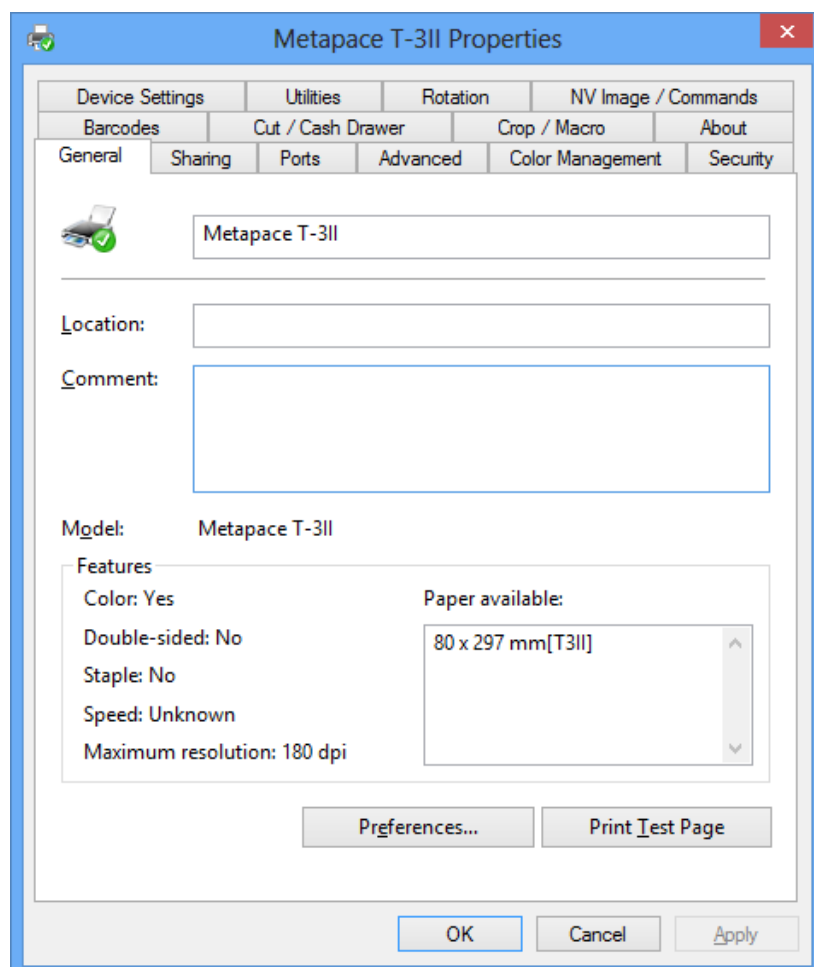
6) Open the printer properties window in the Windows OS.
※ Control Panel – Hardware and Sound – Device and Printers.

7) In the “Ports” tab, click “Configure Port...”
※ Pass this step if you are using a parallel port.

- 8) Match the communication settings to those of the printer. The communication settings of the printer can be performed by conducting a self-test.
- ※ Pass this step if you are using a parallel port.

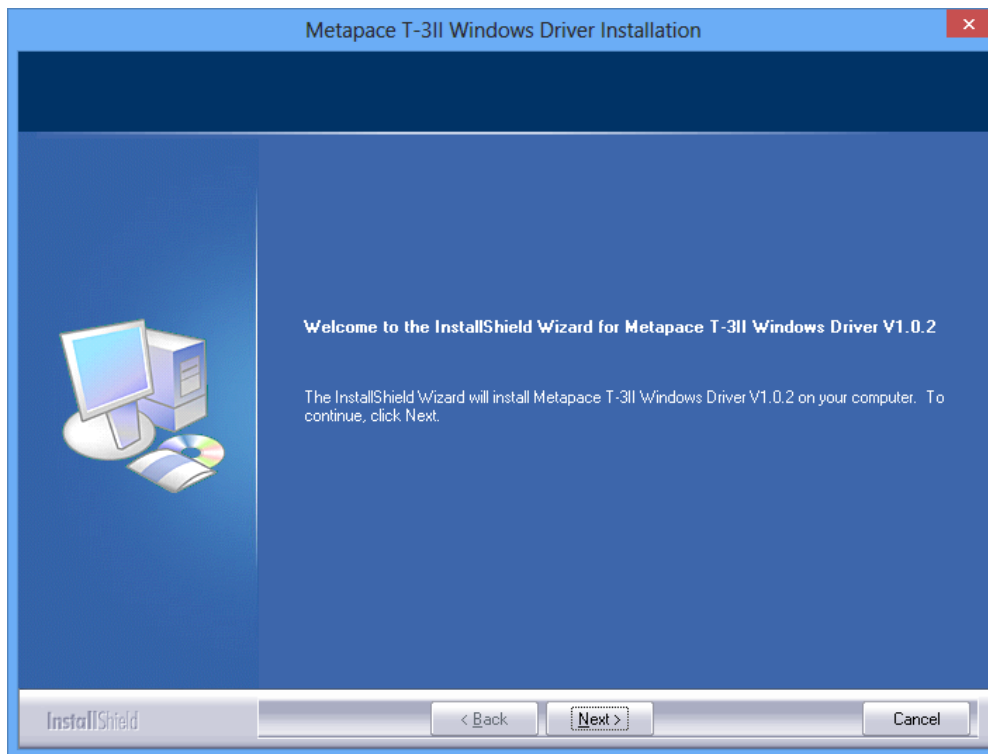


- 9) Click "Print Test Page" and check printing status. Proper installation of the driver is indicated if the test page is printed normally

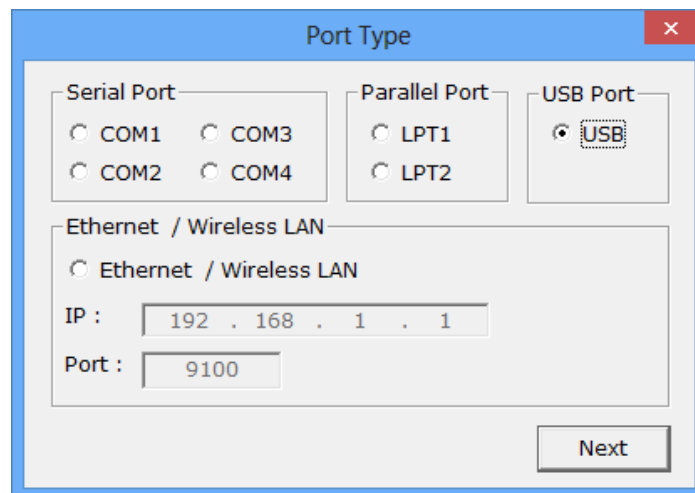


4-2-2 Via USB Port

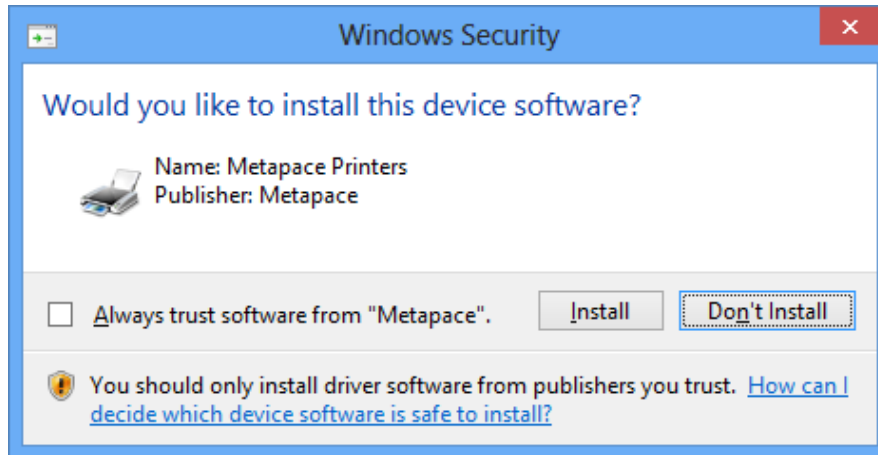
- 1) Double-click the Windows Driver installation file.
- 2) Click “Next”.



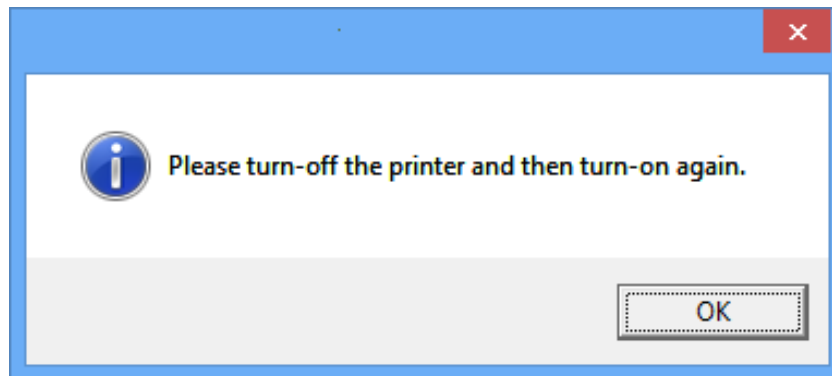
- 3) Select “USB” and then click “Next”.



4) When the following message box appears, click "Install".

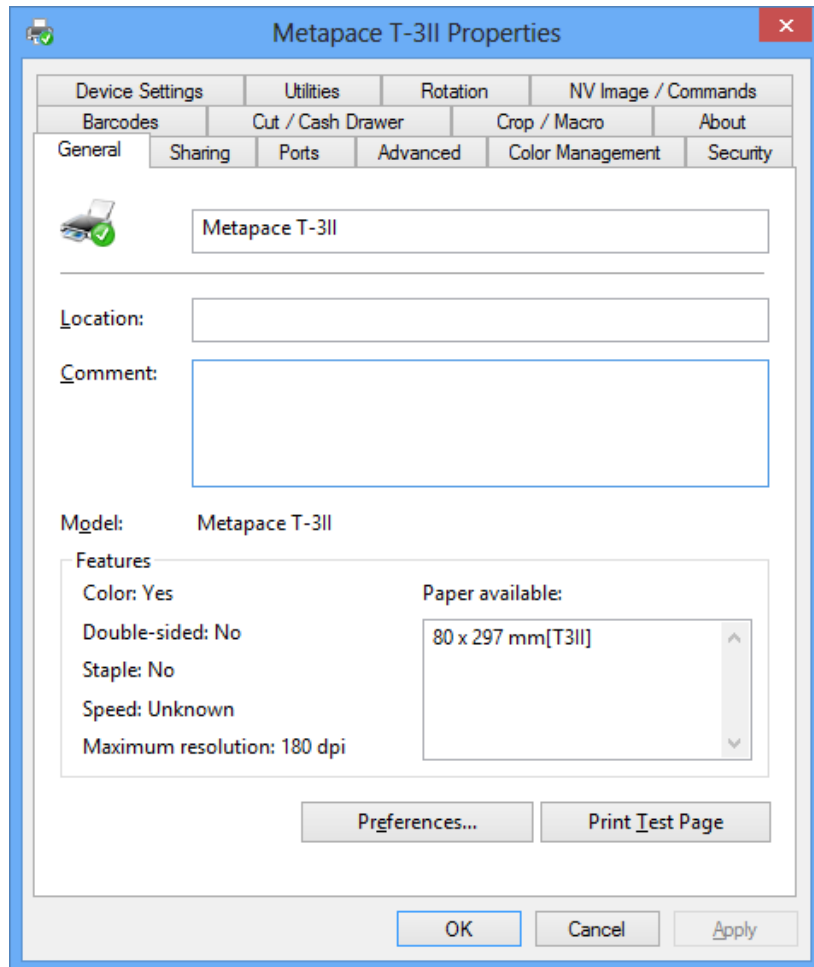


5) Click "OK".



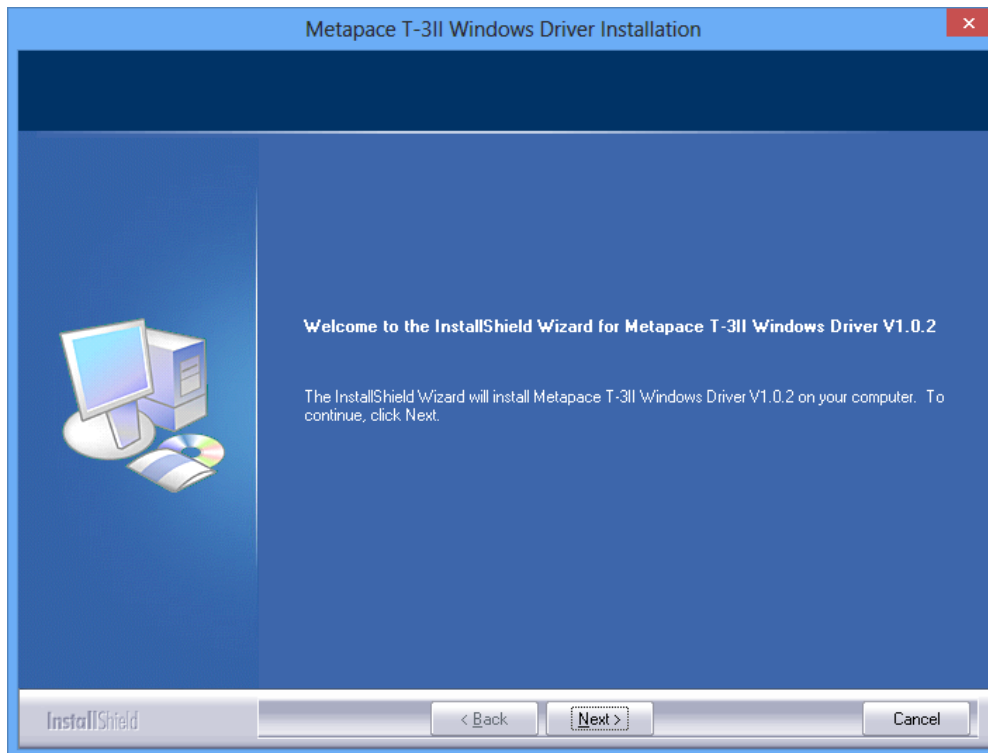
6) Turn off the printer and then turn it on. The printer driver will be installed automatically.

- 7) Open the printer properties window in the Windows OS.
 - ※ Control Panel – Hardware and Sound – Device and Printers.
- 8) Click “Print Test Page” and check printing status. Proper installation of the driver is indicated if the test page is printed normally.

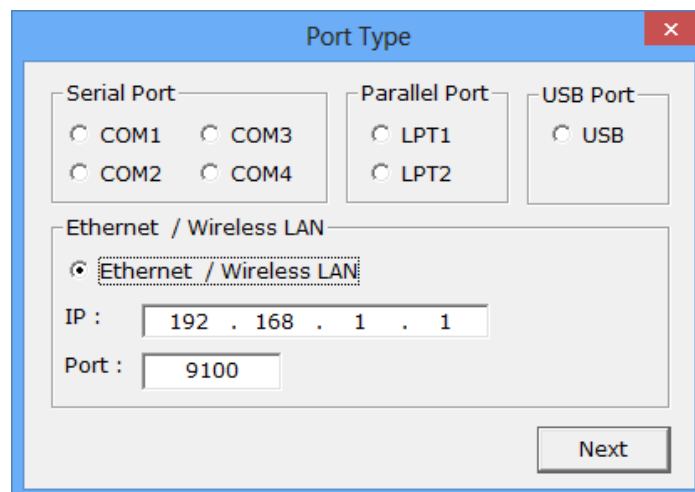


4-2-3 Via Ethernet / Wireless LAN Port

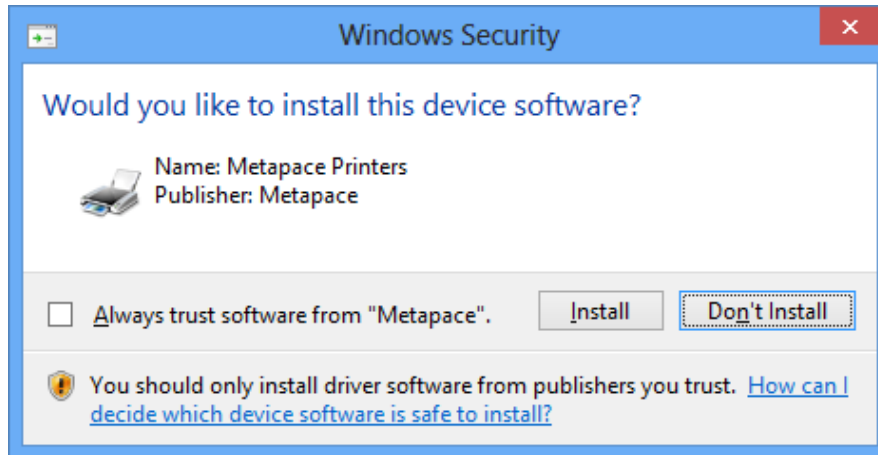
- 1) Double-click the Windows Driver installation file.
- 2) Click “Next”.



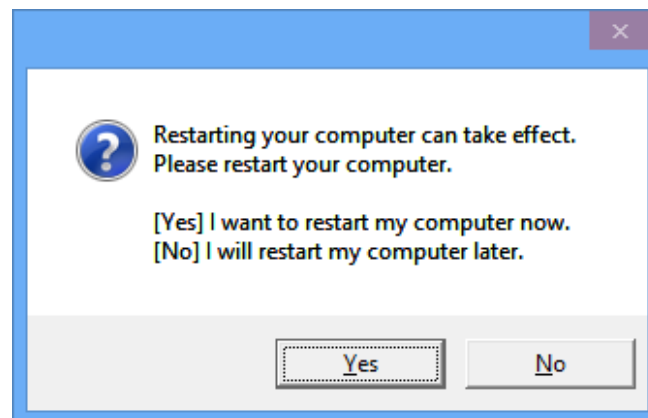
- 3) Select “Ethernet / Wireless LAN”.
- 4) Enter IP address and port number, and then click “Next”.



5) When the following message box appears, click "Install".



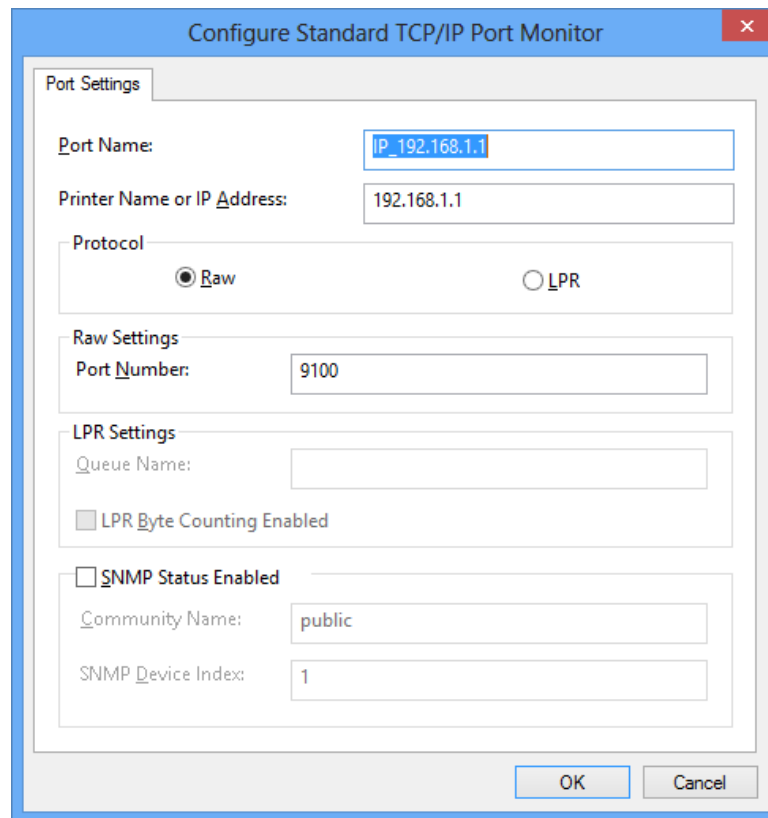
6) Click "Yes" to reboot the PC.



7) Open the printer properties window in the Windows OS.
※ Control Panel – Hardware and Sound – Device and Printers.

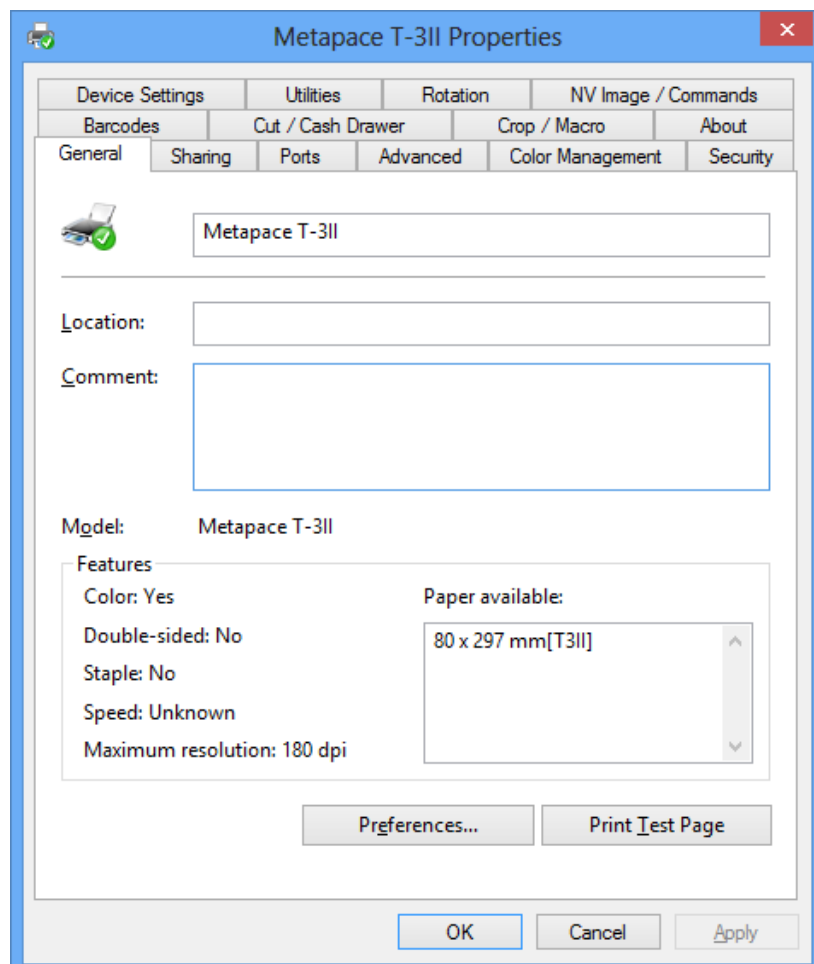
8) In the Ports tab, click "Configure Port...".

9) Match the communication settings to those of the printer.



The image shows a Windows dialog box titled "Configure Standard TCP/IP Port Monitor". It has a "Port Settings" tab. The "Port Name" field contains "IP_192.168.1.1". The "Printer Name or IP Address" field contains "192.168.1.1". Under the "Protocol" section, the "Raw" radio button is selected. The "Raw Settings" section has a "Port Number" field with "9100". The "LPR Settings" section has an empty "Queue Name" field and an unchecked "LPR Byte Counting Enabled" checkbox. The "SNMP Status Enabled" checkbox is also unchecked. Below it, the "Community Name" field contains "public" and the "SNMP Device Index" field contains "1". At the bottom right are "OK" and "Cancel" buttons.

- 10) Click "Print Test Page" and check printing status. Proper installation of the driver is indicated if the test page is printed normally.



The image shows a Windows dialog box titled "Metapace T-3II Properties". It has multiple tabs: "Device Settings", "Utilities", "Rotation", "NV Image / Commands", "Barcodes", "Cut / Cash Drawer", "Crop / Macro", "About", "General", "Sharing", "Ports", "Advanced", "Color Management", and "Security". The "General" tab is selected. It shows a printer icon and the name "Metapace T-3II". There are fields for "Location:" and "Comment:". The "Model:" field shows "Metapace T-3II". Under "Features", there are labels for "Color: Yes", "Double-sided: No", "Staple: No", "Speed: Unknown", and "Maximum resolution: 180 dpi". To the right, under "Paper available:", there is a list box showing "80 x 297 mm[T3II]". At the bottom are "Preferences...", "Print Test Page", "OK", "Cancel", and "Apply" buttons.

5. Detailed Settings of Windows Driver

The following detailed functions can be configured after installing the Windows driver.

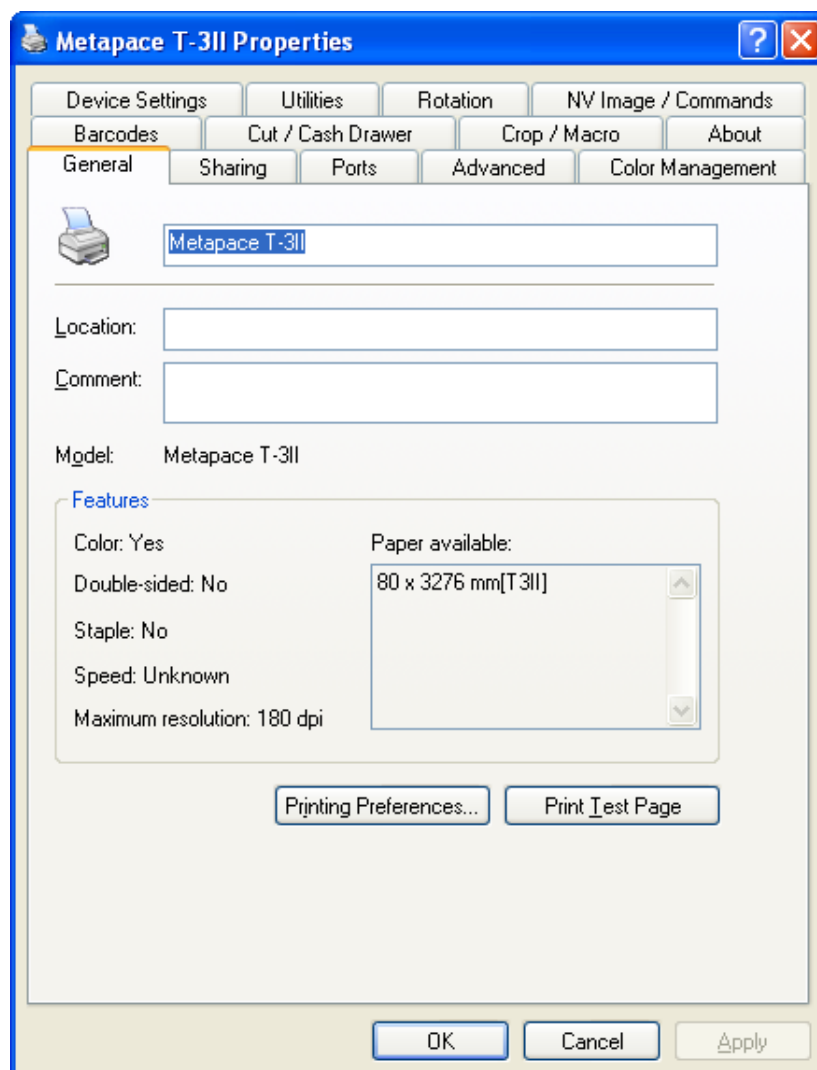
5-1 Paper feed option

The printer supports two paper sources.

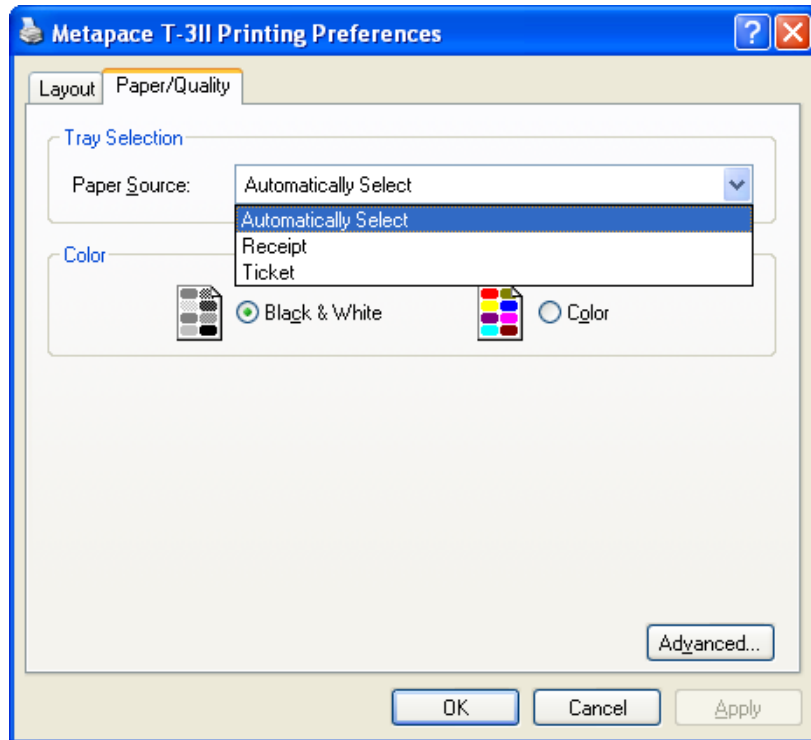
Automatically Select : Select the “Receipt” automatically.
Receipt : Each page can be printed with various lengths.
Ticket : Each page can be printed with the same length.

Follow the instructions shown below for setting options.

1) Open the Printer Properties window for the corresponding OS.



- 2) Click "Printing Preferences" in the "General" tab.
- 3) Select the desired setting in the "Paper/Quality" tab.



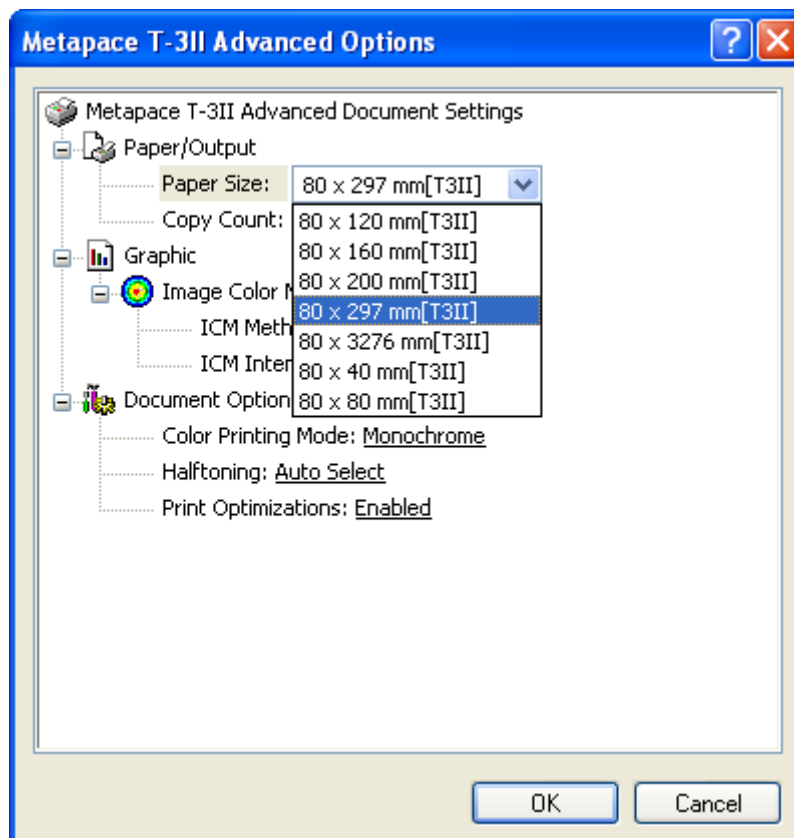
5-2 Paper size

The following paper sizes can be selected with this Windows driver.

80 × 40 mm[T3II]	80 × 297 mm[T3II]
80 × 80 mm[T3II]	80 × 3276 mm[T3II]
80 × 120 mm[T3II]	
80 × 160 mm[T3II]	
80 × 200 mm[T3II]	

Follow the instructions shown below to set the options.

- 1) Click “Printing Preferences” in the “General” tab.
- 2) Click “Advanced” in the “Paper/Quality” tab.
- 3) Select a paper size in the list and then click “OK”. If you need a custom paper size, you can add it by clicking “New Paper Size” in the “Utilities” tab.



5-3 NV Image / Commands

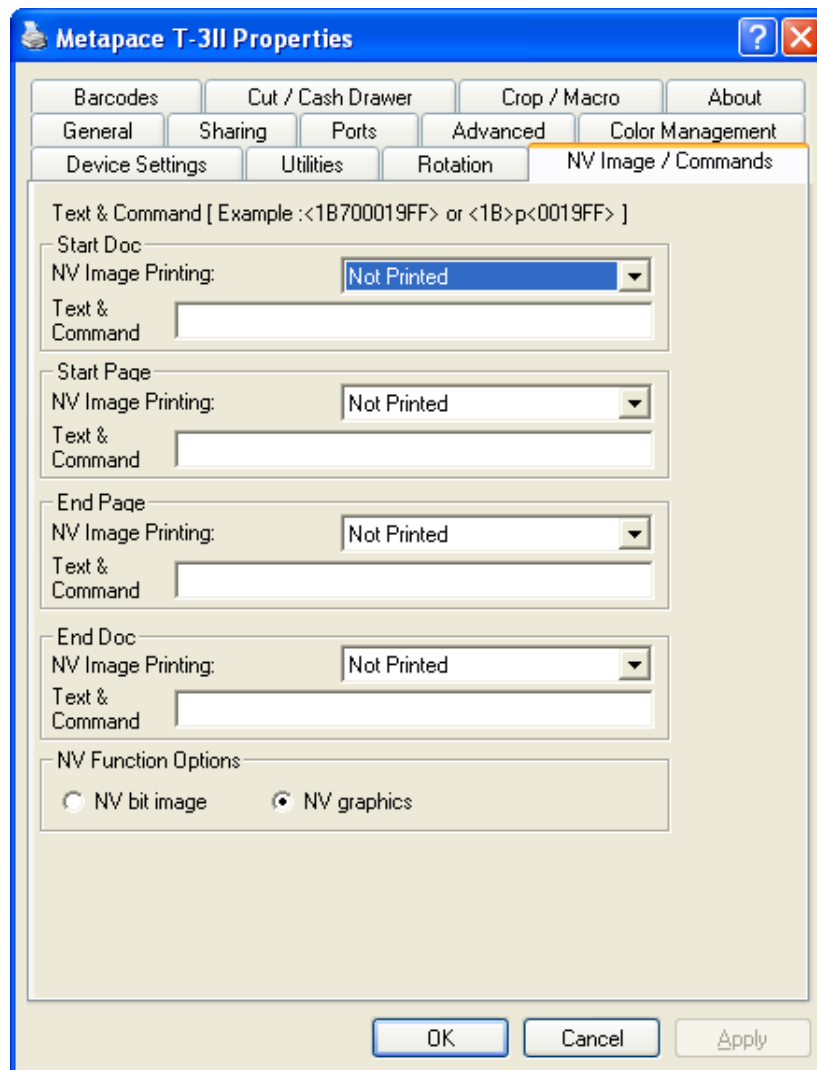
The Windows Driver serves to receive the content for print from an application and send it to the printer. The NV Image and Commands function allows for the addition of desired NV Images and commands at the beginning or end of the print content sent to the printer.

The command functions available are as follows.

- Start Doc : Addition of NV Images and command at the beginning of the print job.
- Start Page : Addition of NV Images and command at the beginning of the print page.
- End Page : Addition of NV Images and command at the end of the print page.
- End Doc : Addition of NV Images and command at the end of the print job.

Follow the instructions shown below to set the options.

- 1) Open the printer properties window in the Windows OS.
- 2) Click the “NV Image / Commands” tab.



- 3) To open Cash Drawer 1 before printing, enter "<1B700019FF>" in the "Start Doc" space and click "OK".
 - 4) To open Cash Drawer 1 after printing, enter "<1B700019FF>" in the "End Doc" field and click "OK".
 - 5) To print the NV image with the document, select the NV image number in the memory and click "OK".
- ※ Image print command changes when the image is downloaded into the printer using NV Image Tool in Unified POS Utility.
- [NV bit image]
Command: FS p n m (Hex: 1C 70 m n)
 - [NV Graphics]
Command: GS (L pL pH m fn kc1 kc2 x y (Hex: 1D 28 4C pL pH m fn kc1 kc2 x y)

5-4 Crop / Macro

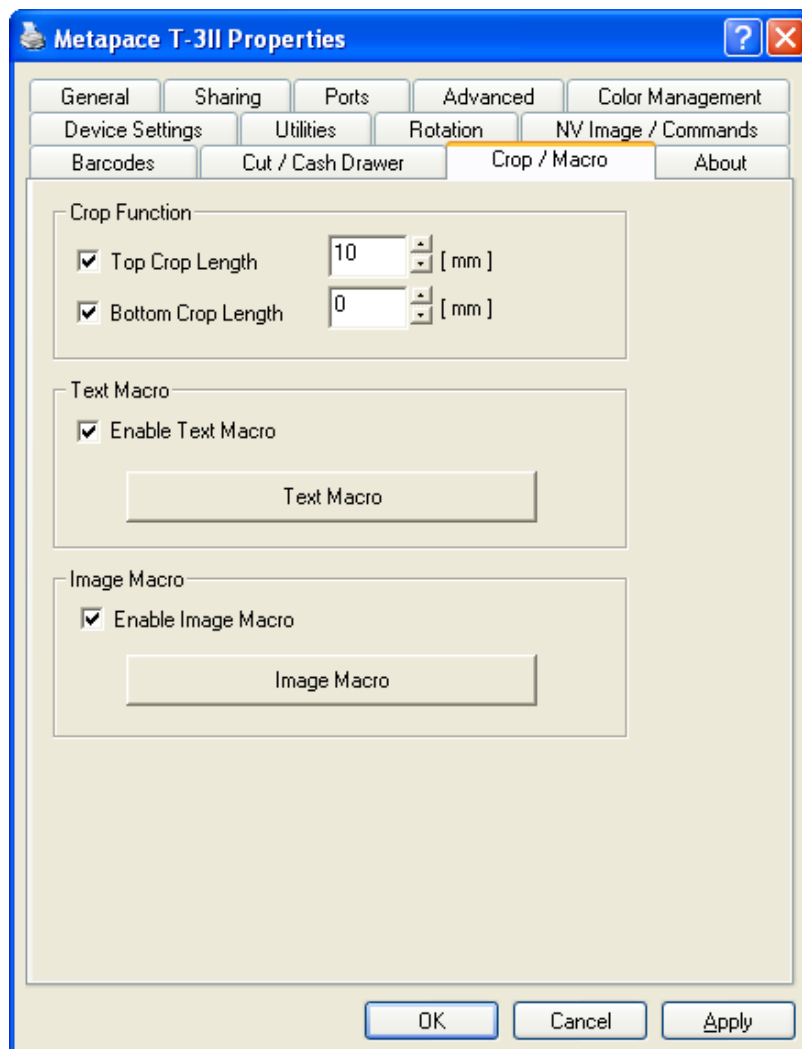
This Windows driver supports “Crop / Macro” function.

1. Crop function is to crop white space of receipt and it can be set from 0 mm to 99 mm.
2. Text Macro function is to replace certain text string with another text string for printing, and it is useful for changing address or telephone number from the application software.
3. Image Macro function replaces certain text string with an image.

Follow the instructions shown below to set the options.

Crop

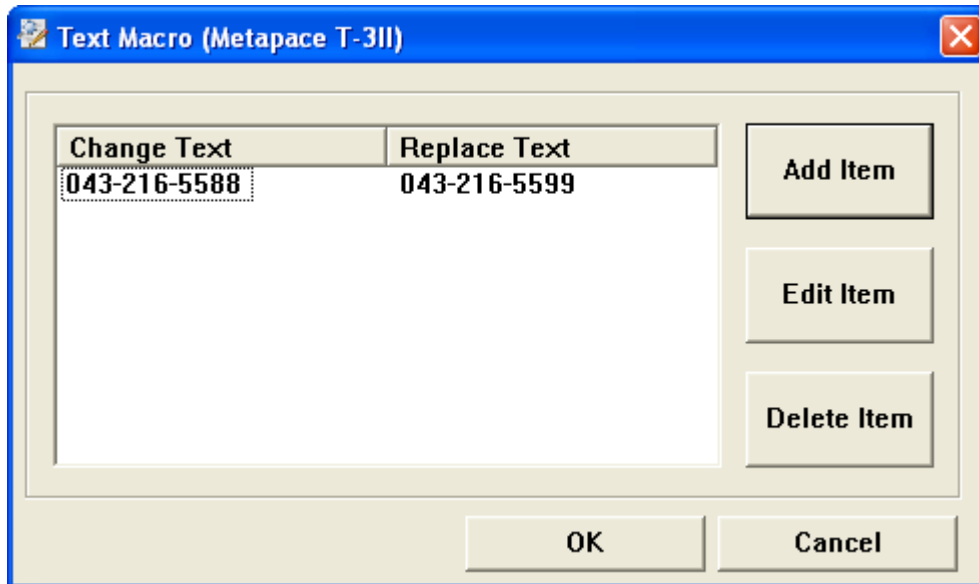
- 1) Open the Printer Properties window for the corresponding OS.
- 2) Select the “Crop / Macro” tab.



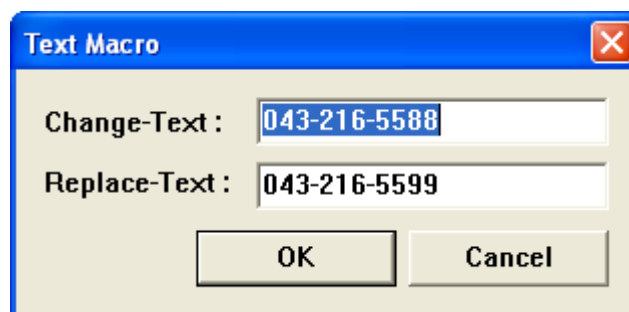
- 3) To cut the space at the top of the receipt, tick “Top Crop Length” checkbox and specify the length to cut.
- 4) To cut the space at the bottom of the receipt, tick “Bottom Crop Length” checkbox and specify the length to cut.

Text Macro

- 1) Open the Printer Properties window for the corresponding OS.
- 2) Select the “Crop / Macro” tab.
- 3) Tick “Enable Text Macro” to make this function enabled.



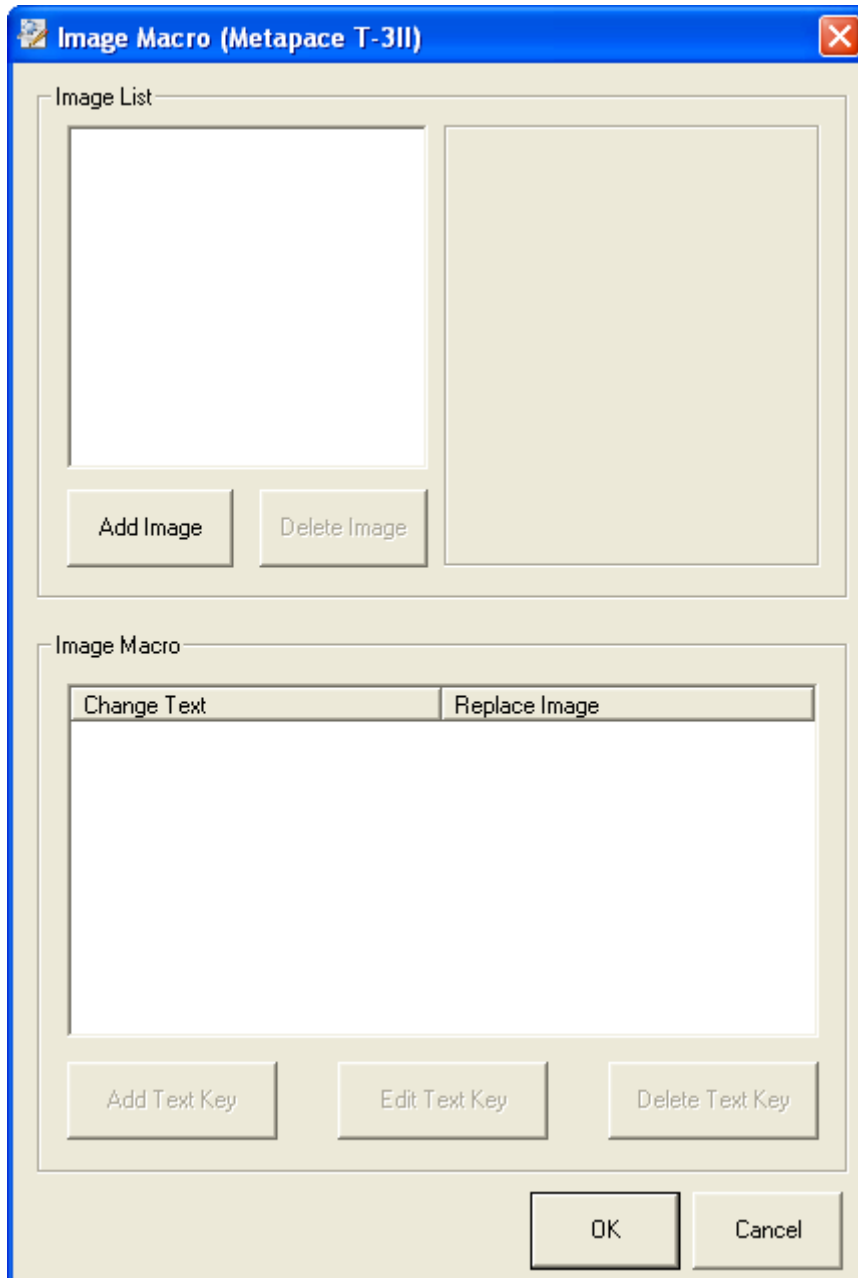
- 4) When the Text Macro window comes up, click “Add Item”, and then specify texts in “Change Text” and “Replace Text”.



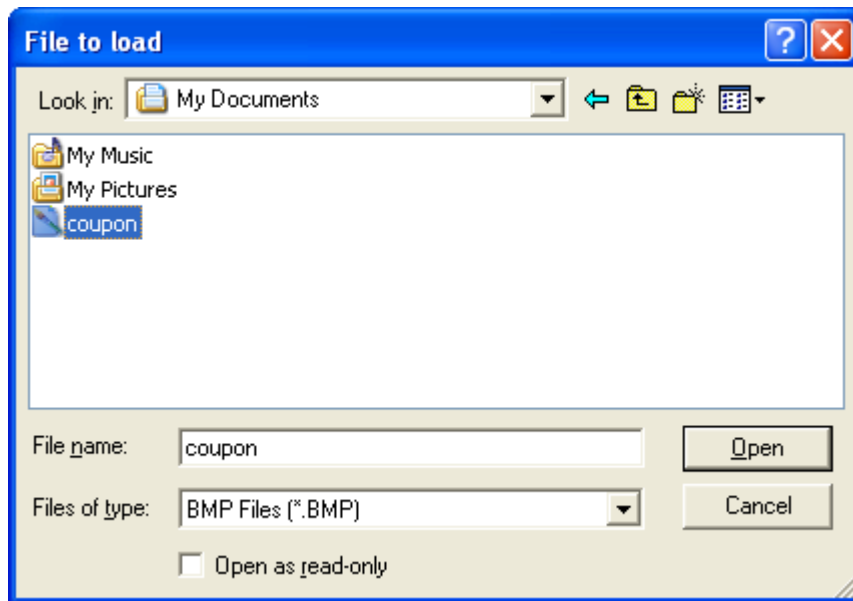
- 5) Click “OK”.

Image Macro

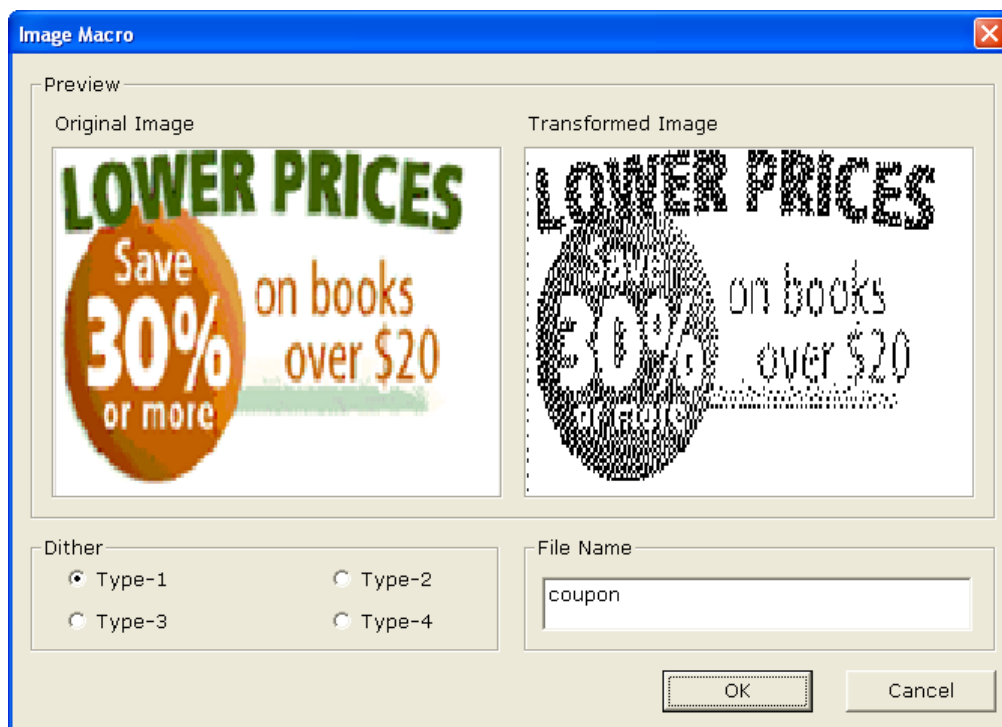
- 1) Open the Printer Properties window for the corresponding OS.
- 2) Select the “Crop / Macro” tab.
- 3) Tick “Enable Image Macro” to make this function enabled.



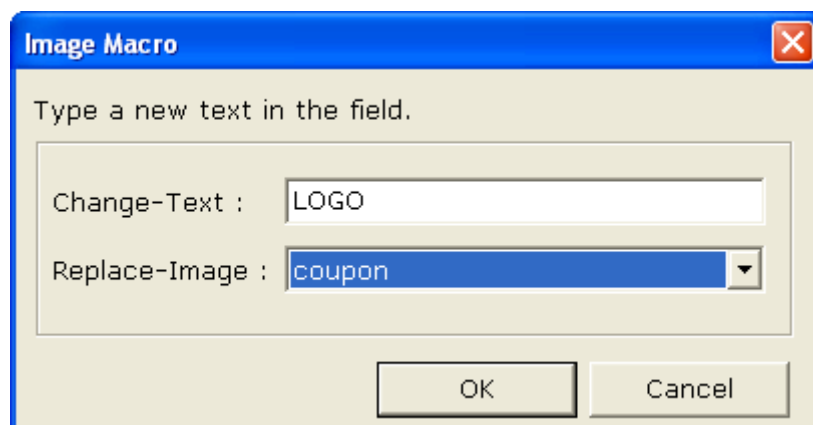
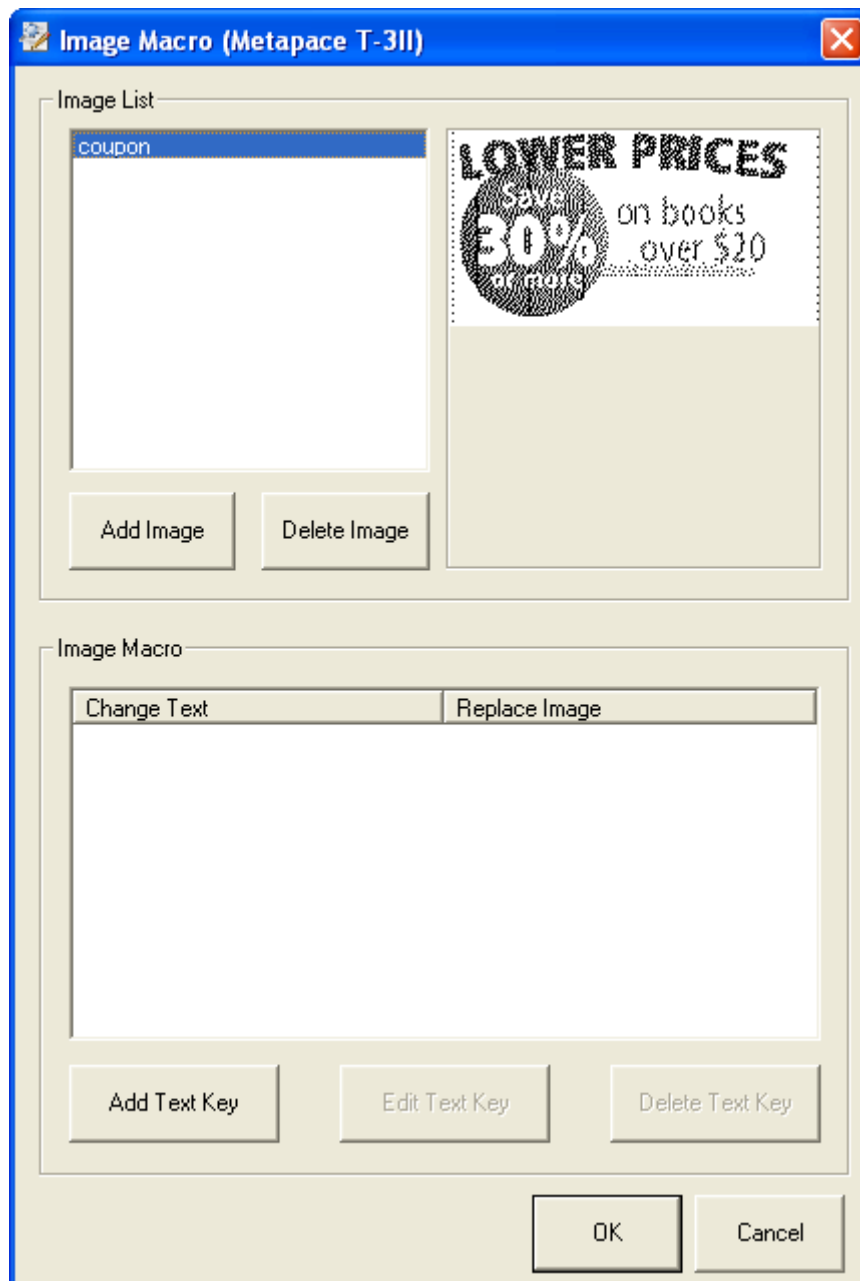
4) Click “Add Image” to add it to the image list.



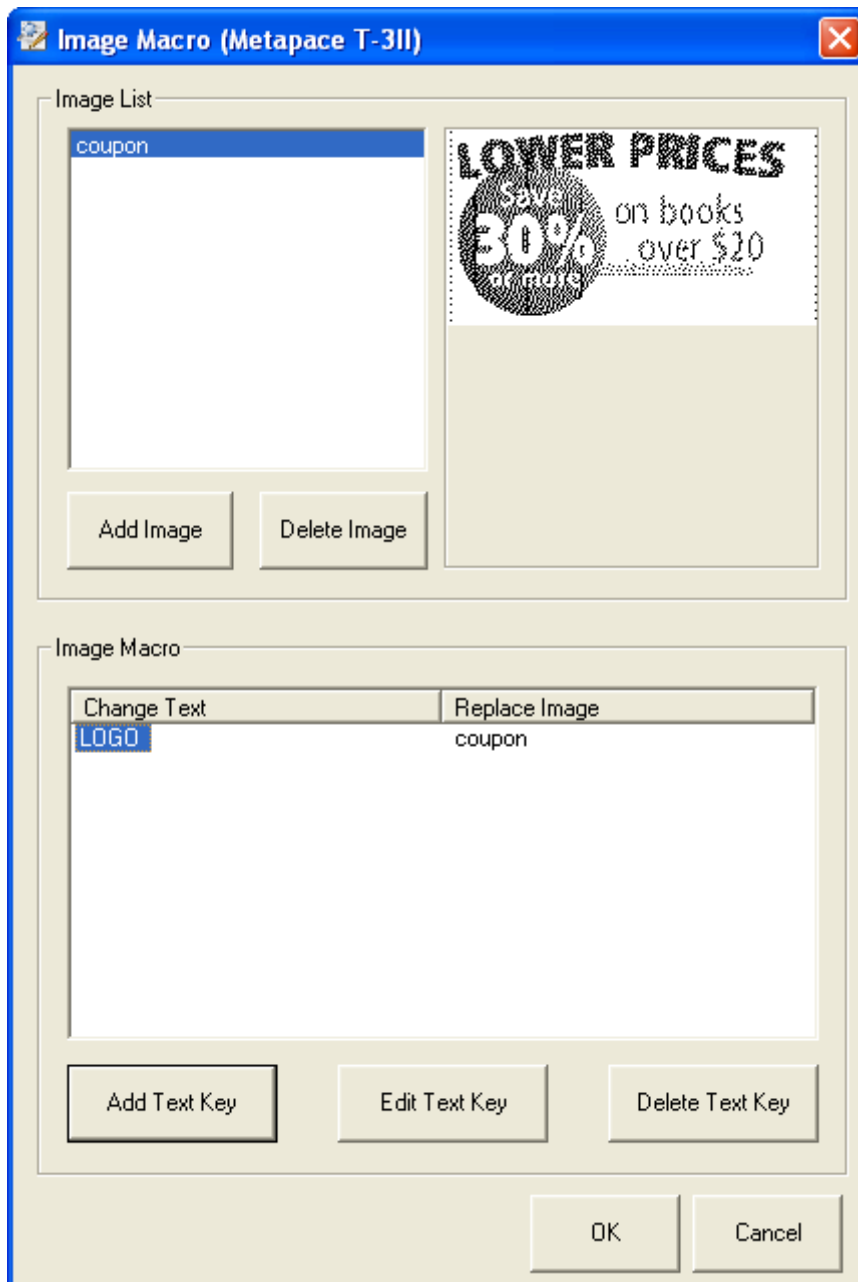
5) Assign an appropriate name for the image file to be added to the list and select a dithering type.



- 6) Click “Add Text Key” to set the text key and the image to replace the corresponding text key.



7) Click "OK".



5-5 Barcodes

This Windows driver supports the various bar codes as shown in the following table. Select the "Printer Font Name" and enter the barcode data to print.

Barcodes

Printer Font Name	Size	Supported Characters
Codabar	20/40/60/80	Numeric: 0~9 Symbols: \$, +, -, ., /, : Letters: A~D
Code39	20/40/60/80	Numeric: 0~9 Symbols: \$, +, -, ., / Letters: A~Z
JAN13(EAN)	20/40/60/80	Numeric: 0~9
JAN8(EAN)	20/40/60/80	Numeric: 0~9
ITF	20/40/60/80	Numeric: 0~9
UPC-A	20/40/60/80	Numeric: 0~9
UPC-E	20/40/60/80	Numeric: 0~9
Code93	20/40/60/80	ASCII CODE: 0~127
Code128	20/40/60/80	ASCII CODE: 0~127

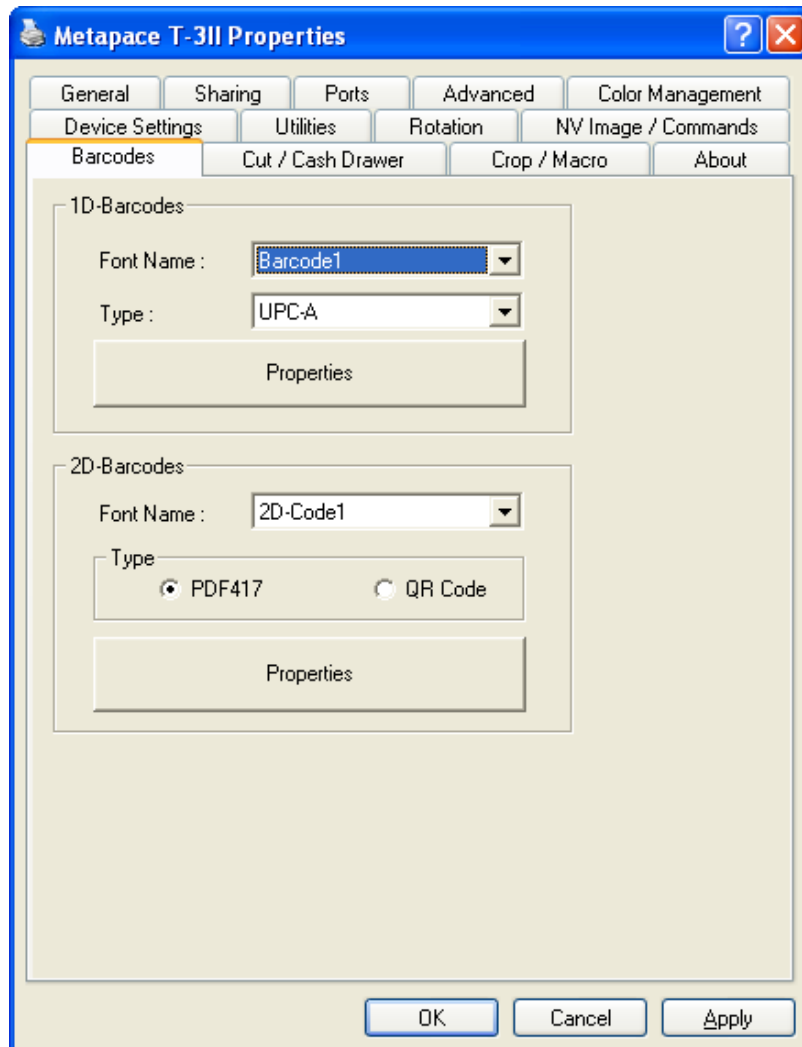
Two-Dimensional Barcodes

The Windows driver supports the following two-dimensional barcodes.

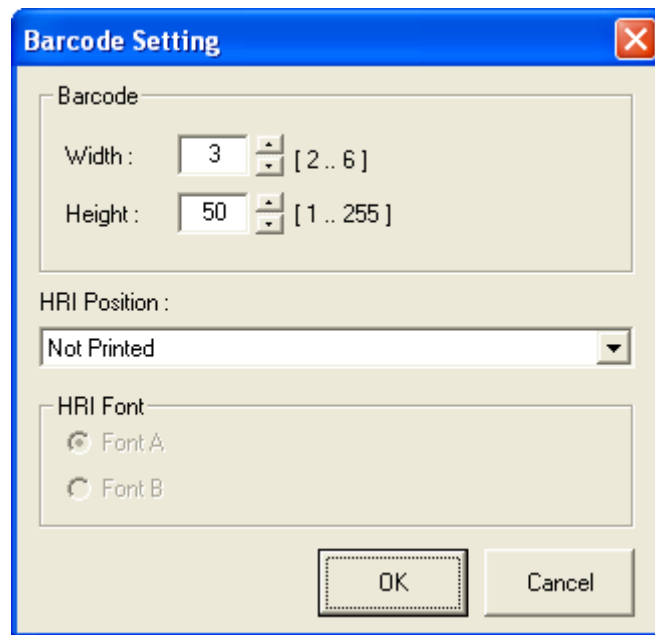
- PDF417
- QR Code

Follow the instructions shown below to use this function.

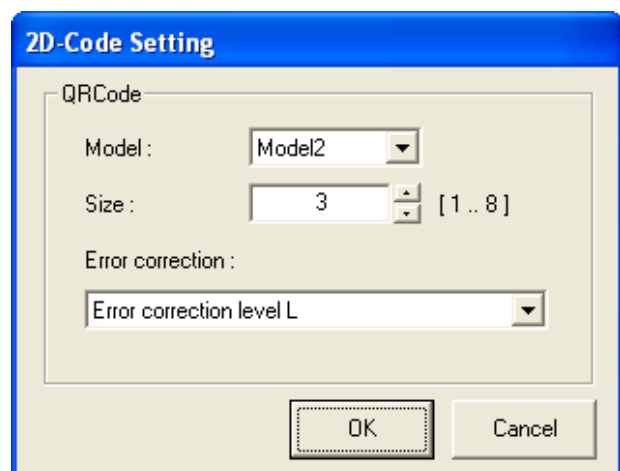
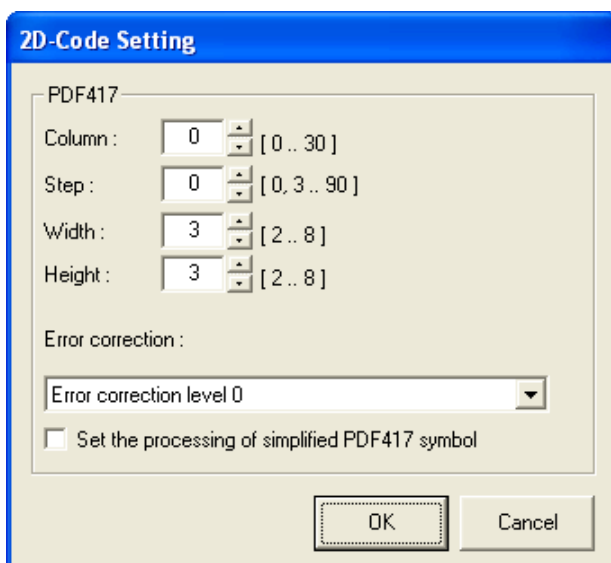
- 1) Open the Printer Properties window for the corresponding OS.
- 2) Select the “Barcodes” tab.



- 3) Select a font name of barcodes, a type of barcodes and then click “Properties”.



- 4) You can set the properties of barcodes such as width, height and HRI options in “Barcode Setting” window.
- 5) You can also set the properties of PDF417 and QR code in “2D-Code Setting” window.



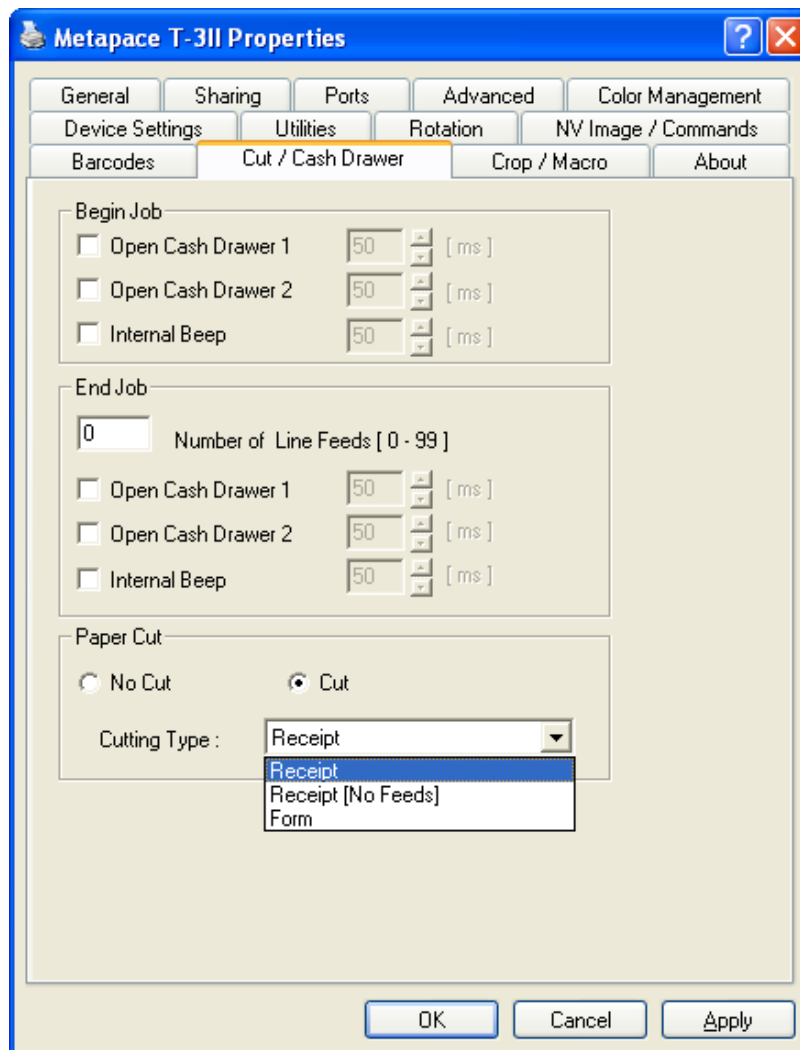
- 6) Click “OK” after setting the properties of 1d and 2d barcodes.

5-6 Cut / Cash Drawer

Windows driver supports “Open cash drawer”, “Internal Beep”, and “Cutting Option” functions. Users can set “Open cash drawer” and “Internal beep” both before printing and after printing and can also set “Cutting options” the cutting option can be adjusted as follows.

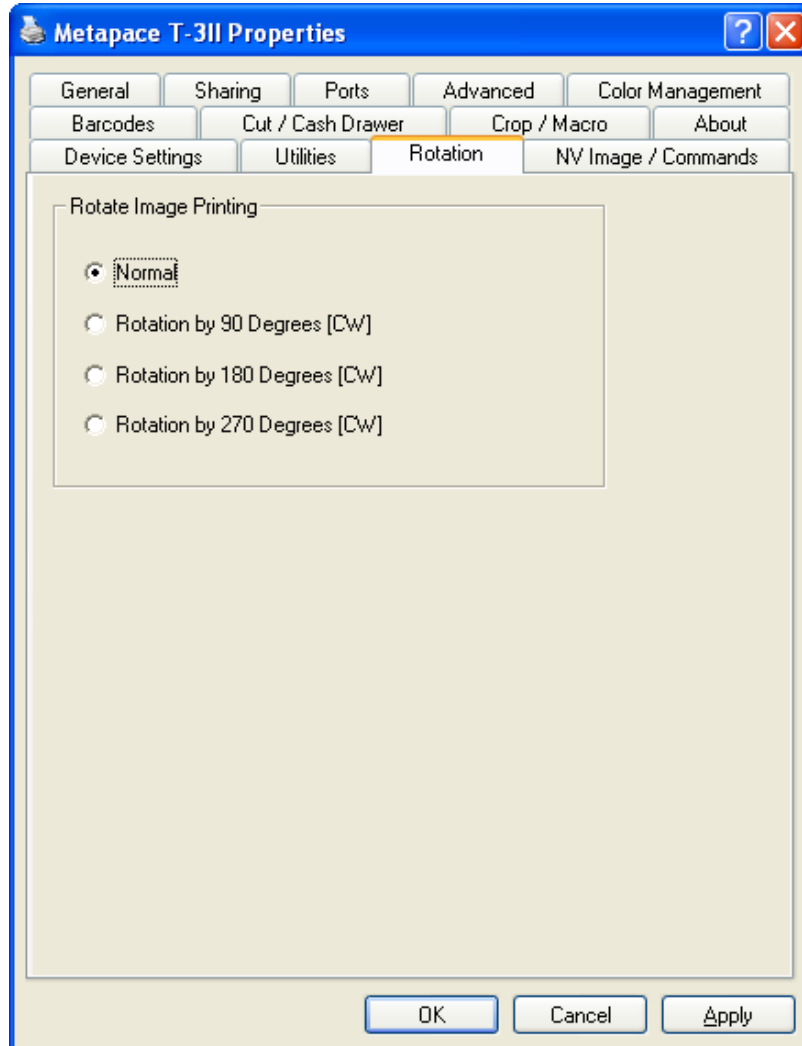
No Cut: There’s no cutting after the end of printing.

- Receipt : A paper is cut by auto cutter.
- Receipt[No Feeds] : A paper is cut by auto cutter without paper feeding.
- Form : For long print jobs, printed text is transferred and cut according to the Receipt option per selected paper size.



5-7 Image Rotation

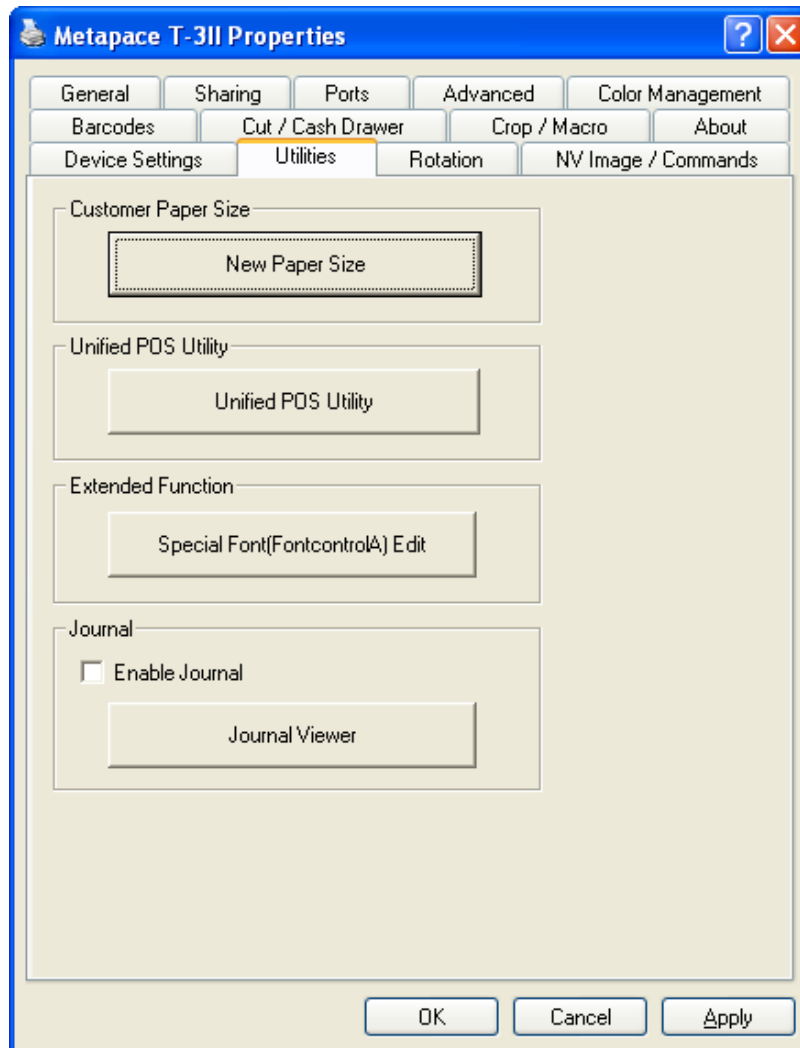
This Windows driver supports “Rotation printing” function for image data. But rotating device font or barcode font is not supported, and cannot be available in color printing mode. Color printing mode will be changed to mono printing mode automatically if this function is used.



5-8 Utilities

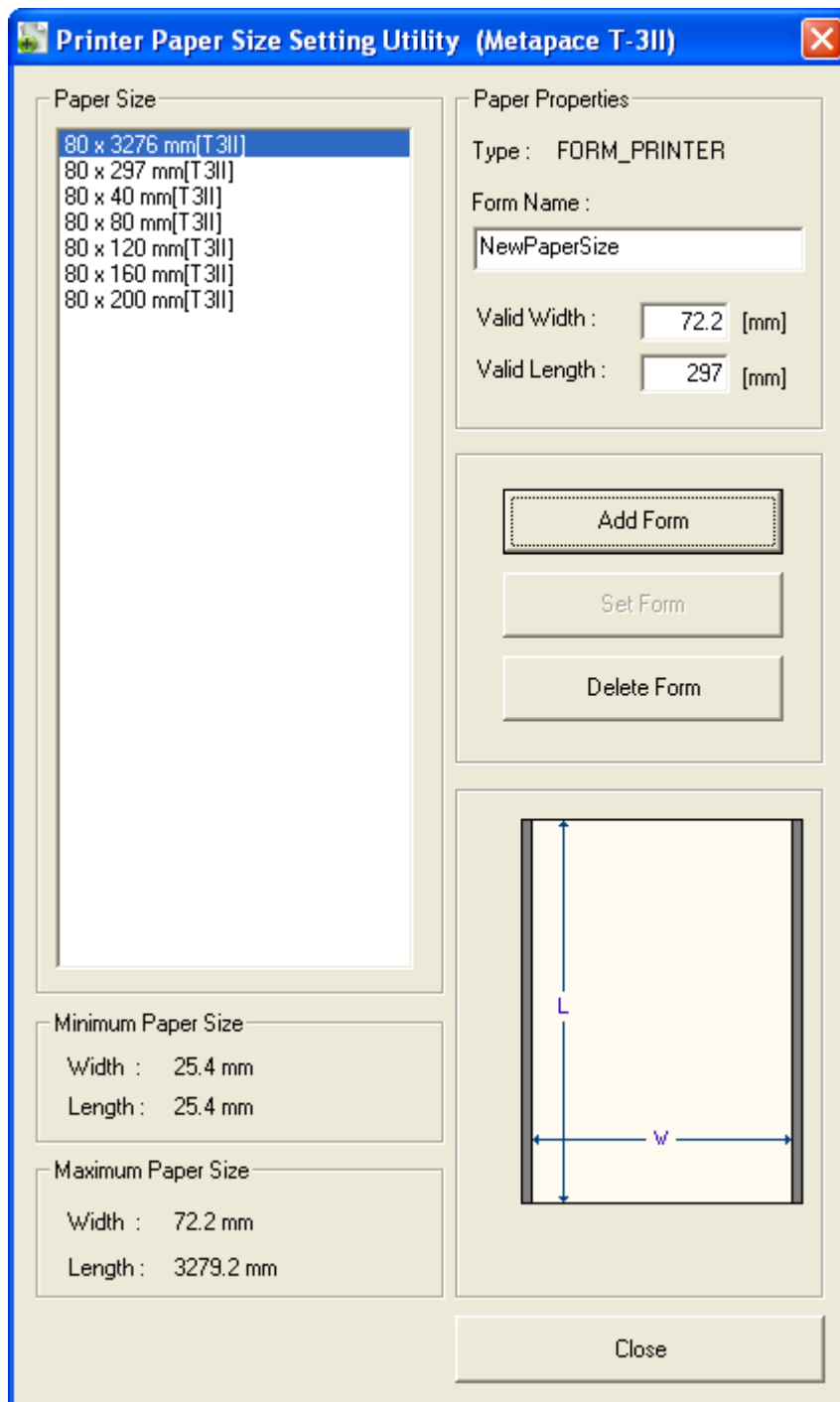
This Windows driver provides the following utilities.

- New Paper Size : Defines a custom paper size.
- Unified POS Utility : Includes NV tool, VMSM and command test editor.
- Special Font Edit : Defines a custom command for the special font named as "FontControlA".
- Journal Viewer : Saves a copy of the printed receipt per print job.



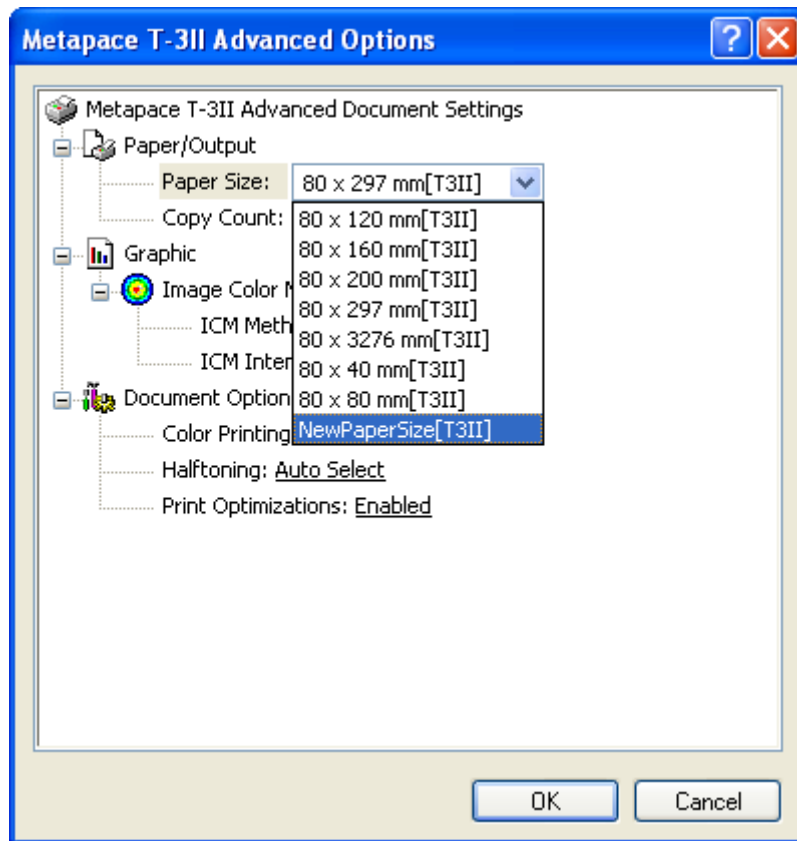
5-8-1 New Paper Size

- 1) Click “New Paper Size” in the “Utilities” tab.
- 2) Specify form name, and set a valid width and height.



- 3) Click “Add Form” to register a custom paper. If the specified paper name already exists on the system, you can update the paper’s width and length.

4) Select the newly added paper size from the “Advanced Option” window.



5-8-2 Unified POS Utility

Refer to the Unified POS Utility manual contained in the CD for details.

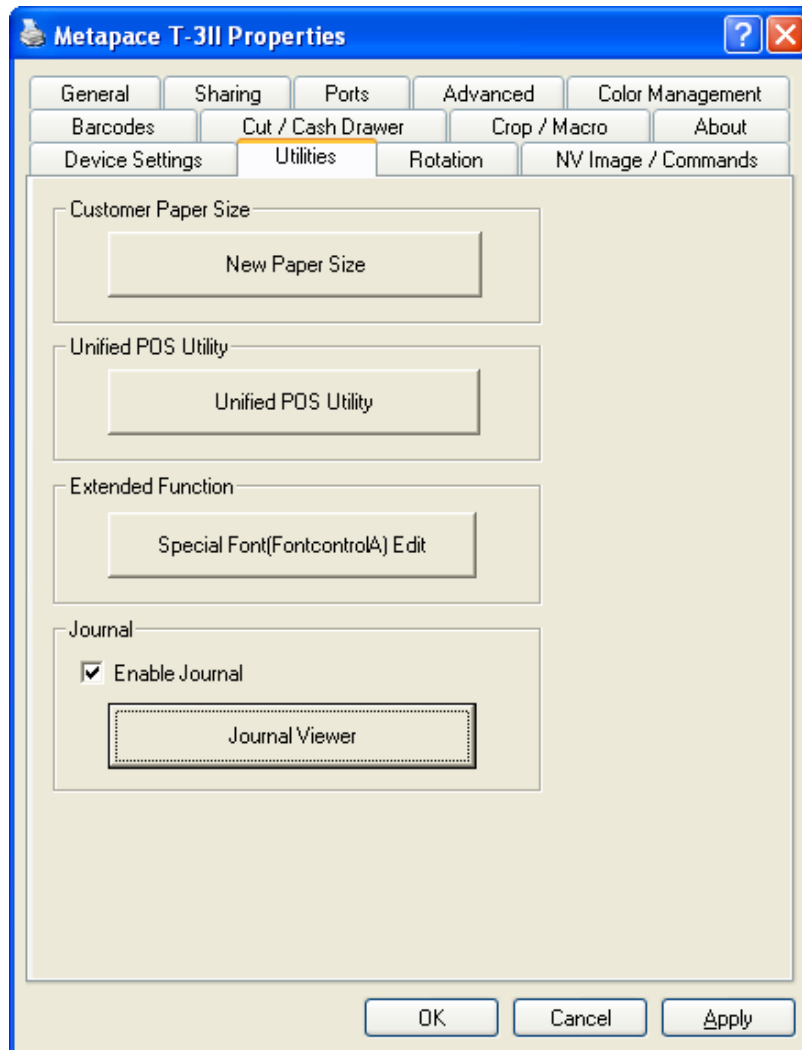
5-8-3 Extended Special Functions

Refer to the section “6-2-1”.

5-8-4 Journal Viewer

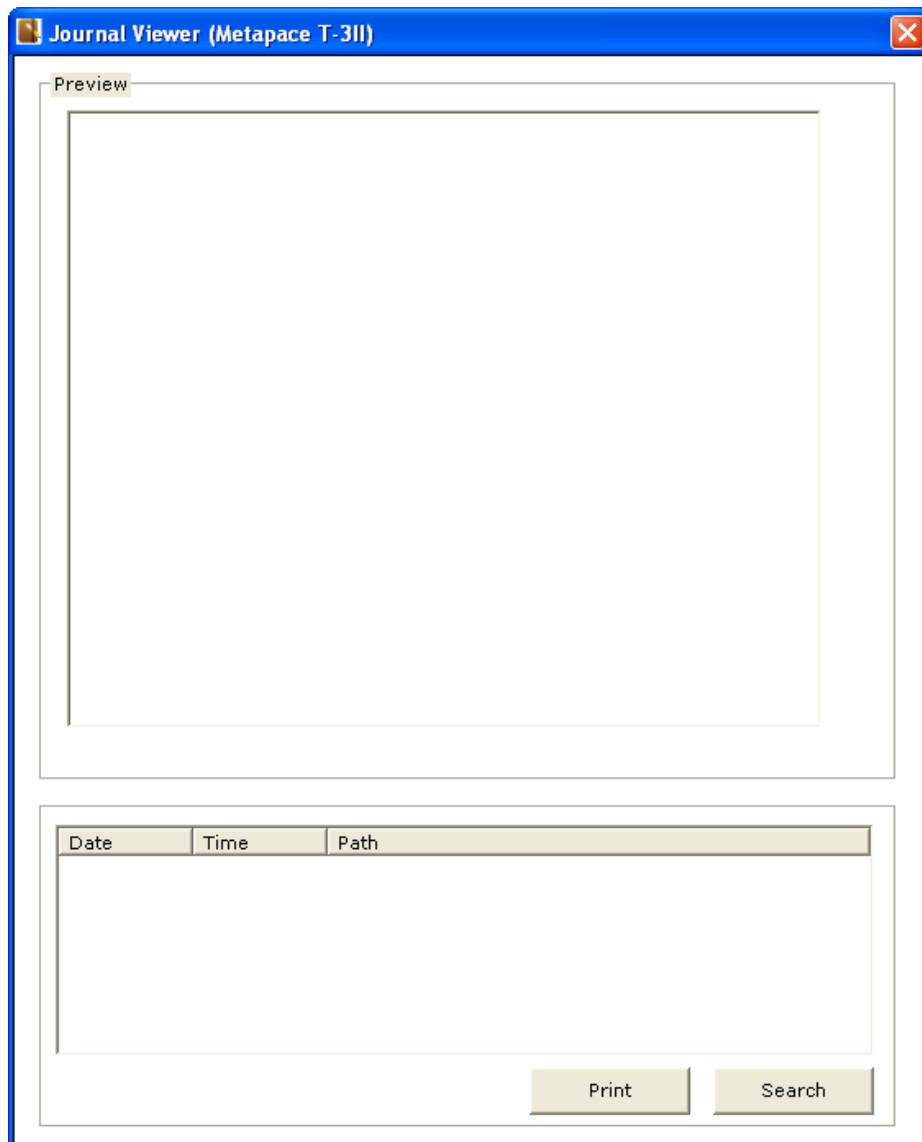
Journal is a function to save a copy of the printed receipt, and you can store the copies without journal printer using this function. Journal function saves a file for each printed document, and the saved files can be searched by printed date or by period with the Journal Viewer utility. This function is supported only when the receipt is printed with image data, and it does not support the receipts printed with device font or barcode. Journal function is not supported in color printing mode. Journal data will not be saved when you try to use this function in color printing mode.

1) Tick “Enable Journal” to make this function enabled.



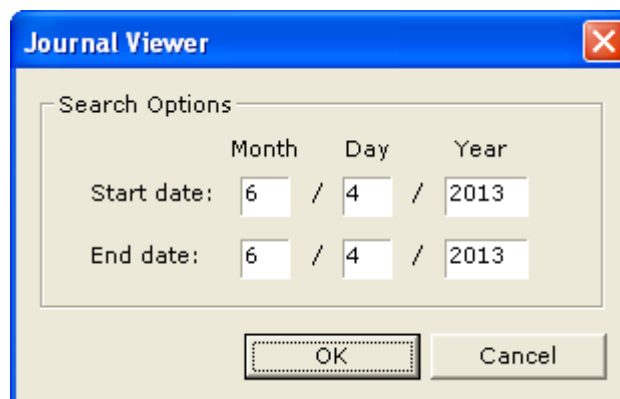
2) Click “Journal Viewer” in the “Utilities” tab.

3) The following window will be launched.



4) Select the file from the list on the bottom and click "Print" to print the file.

5) Click "Search" and set the conditions to search the journals by date or period.



6. Windows Driver Specifications

6-1 Font

This Windows driver supports various fonts in the following table. Printing using these fonts is faster than using Windows fonts provided by the operating system.

Printer font			Font size (dot)	Point size
FontA1x1	FontA1x1[Ext.]	FontA1x1[255]	12 x 24	9.5
FontA1x2	FontA1x2[Ext.]	FontA1x2[255]	12 x 48	19
FontA2x1	FontA2x1[Ext.]	FontA2x1[255]	24 x 24	9.5
FontA2x2	FontA2x2[Ext.]	FontA2x2[255]	24 x 48	19
FontA2x4	FontA2x4[Ext.]	FontA2x4[255]	24 x 96	38.5
FontA4x2	FontA4x2[Ext.]	FontA4x2[255]	48 x 48	19
FontA4x4	FontA4x4[Ext.]	FontA4x4[255]	48 x 96	38.5
FontA4x8	FontA4x8[Ext.]	FontA4x8[255]	48 x 192	77
FontA8x4	FontA8x4[Ext.]	FontA8x4[255]	96 x 96	38.5
FontA8x8	FontA8x8[Ext.]	FontA8x8[255]	96 x 192	77
FontB1x1	FontB1x1[Ext.]	FontB1x1[255]	9 x 17	7
FontB1x2	FontB1x2[Ext.]	FontB1x2[255]	9 x 34	13.5
FontB2x1	FontB2x1[Ext.]	FontB2x1[255]	18 x 17	7
FontB2x2	FontB2x2[Ext.]	FontB2x2[255]	18 x 34	13.5
FontB2x4	FontB2x4[Ext.]	FontB2x4[255]	18 x 68	27
FontB4x2	FontB4x2[Ext.]	FontB4x2[255]	36 x 34	13.5
FontB4x4	FontB4x4[Ext.]	FontB4x4[255]	36 x 68	27
FontB4x8	FontB4x8[Ext.]	FontB4x8[255]	36 x 136	54.5
FontB8x4	FontB8x4[Ext.]	FontB8x4[255]	72 x 68	27
FontB8x8	FontB8x8[Ext.]	FontB8x8[255]	72 x 136	54.5
FontC1x1	FontC1x1 [Ext.]	FontC1x1 [255]	9 x 24	9.5
FontC1x2	FontC1x2 [Ext.]	FontC1x2 [255]	9 x 48	19
FontC2x1	FontC2x1 [Ext.]	FontC2x1 [255]	18 x 24	9.5
FontC2x2	FontC2x2 [Ext.]	FontC2x2 [255]	18 x 48	19
FontC2x4	FontC2x4 [Ext.]	FontC2x4 [255]	18 x 96	38.5
FontC4x2	FontC4x2 [Ext.]	FontC4x2 [255]	36 x 48	19
FontC4x4	FontC4x4 [Ext.]	FontC4x4 [255]	36 x 96	38.5
FontC4x8	FontC4x8 [Ext.]	FontC4x8 [255]	36 x 192	77
FontC8x4	FontC8x4 [Ext.]	FontC8x4 [255]	72 x 96	38.5
FontC8x8	FontC8x8 [Ext.]	FontC8x8 [255]	72 x 192	77

The details of the printer fonts are as follows.

1) FontA1x2

- ANSI Character code support (Code page 16: 1252)
- Font size (dot): 12 x 48 (Double height)
- Point size: 19

2) FontA1x2 [Ext]

- IBM expansion Character code support (Code page 0: 437)
- Font size (dot): 12 x 48 (Double height)
- Point size: 19

3) FontA1x2 [255]

- BUYER ONLY code support (Code page 255)
- Font size (dot): 12 x 48 (Double height)
- Point size: 19

6-2 Special functions

This Windows driver supports the special functions as shown in the following table. Select "FontControl" font first and use the characters in the table to use the special functions. Take care as this function is not for printing general texts.

Font (Character)	Special Functions
5	Print HT (0 x 09)
6	Print LF (0 x 0A)
7	Print CR (0 x 0D)
a	Open Drawer 2 (50ms driver pulse width)
b	Open Drawer 2 (100ms driver pulse width)
c	Open Drawer 2 (150ms driver pulse width)
d	Open Drawer 2 (200ms driver pulse width)
e	Open Drawer 2 (250ms driver pulse width)
f	Open Drawer 2 without paper feeding (50ms driver pulse width)
g	Cut without paper feeding
i	Print double size color image stored in the address 00
j	Print double size color image stored in the address 01
k	Print double size color image stored in the address 02
l	Print double size color image stored in the address 03
m	Print double size color image stored in the address 04
p	Do not add HRI characters to barcode
q	Add HRI characters above the bard code with FontA
r	Add HRI characters below the bard code with FontA
s	Add HRI characters above the bard code with FontB
t	Add HRI characters below the bard code with FontB
u	Turns white/black reverse printing mode on
v	Turns white/black reverse printing mode off
w	Align text to the left
x	Align text to the center
y	Align text to the right
A	Open Drawer 1 (50ms driver pulse width)
B	Open Drawer 1 (100ms driver pulse width)
C	Open Drawer 1 (150ms driver pulse width)
D	Open Drawer 1 (200ms driver pulse width)
E	Open Drawer 1 (250ms driver pulse width)
F	Open Drawer 1 without paper feeding (50ms driver pulse width)
G	Prints 1 st NV bit image
H	Prints 2 nd NV bit image
I	Prints 3 rd NV bit image
J	Prints 4 th NV bit image
K	Prints 5 th NV bit image
P	Cut Receipt (partial cut)
R	Print the NV Graphics stored in the address 00
S	Print the NV Graphics stored in the address 01
T	Print the NV Graphics stored in the address 02
U	Print the NV Graphics stored in the address 03
V	Print the NV Graphics stored in the address 04
[Print double size NV bitmap image 1
]	Print double size NV bitmap image 2
^	Print double size NV bitmap image 3
_	Print double size NV bitmap image 4
`	Print double size NV bitmap image 5

1) Example

Select "FontControl" font and send 6 for "LF" (Line Feed) operation (instead of printing character "6").

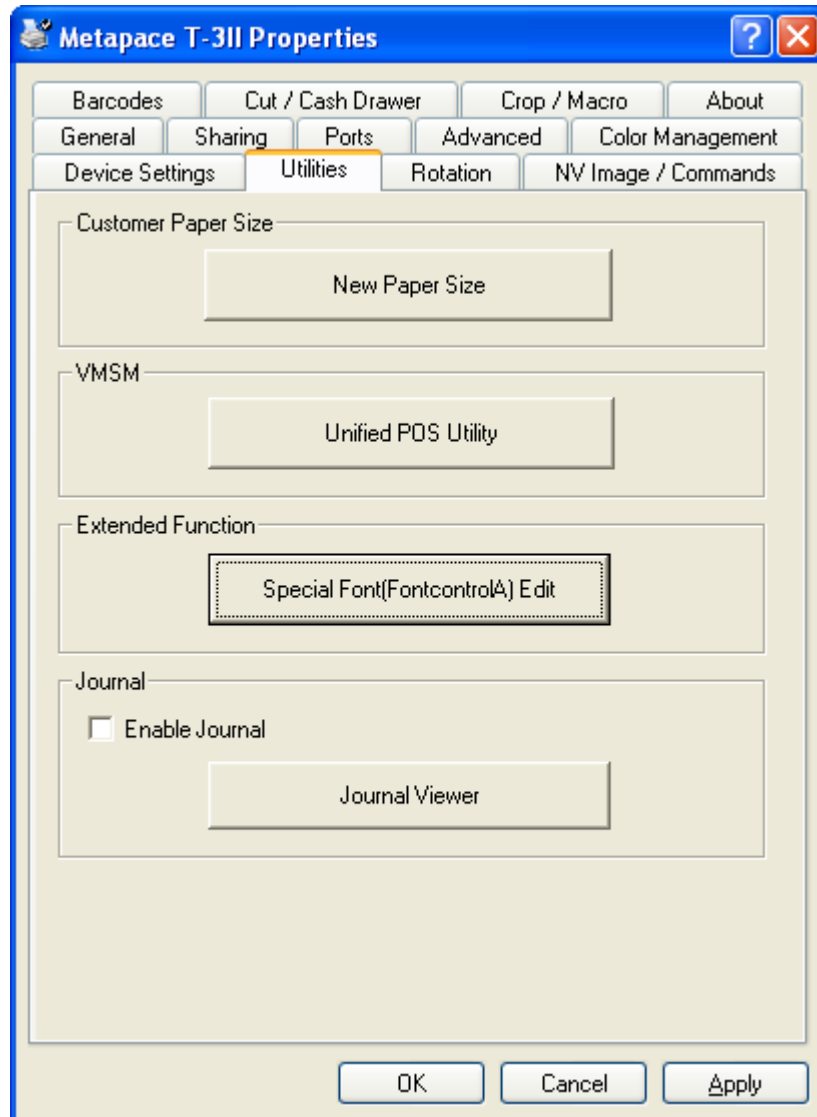
2) "FontControl" character function

Printer font special function	Function	Point size (point/dot)
FontControl	Open Drawer 1 /2 Cut receipt Cut receipt (without paper feeding) Align (left/center/right) Print HT, LF, CR Print barcode Print NV bitmap image	(9.5 / 12x24)

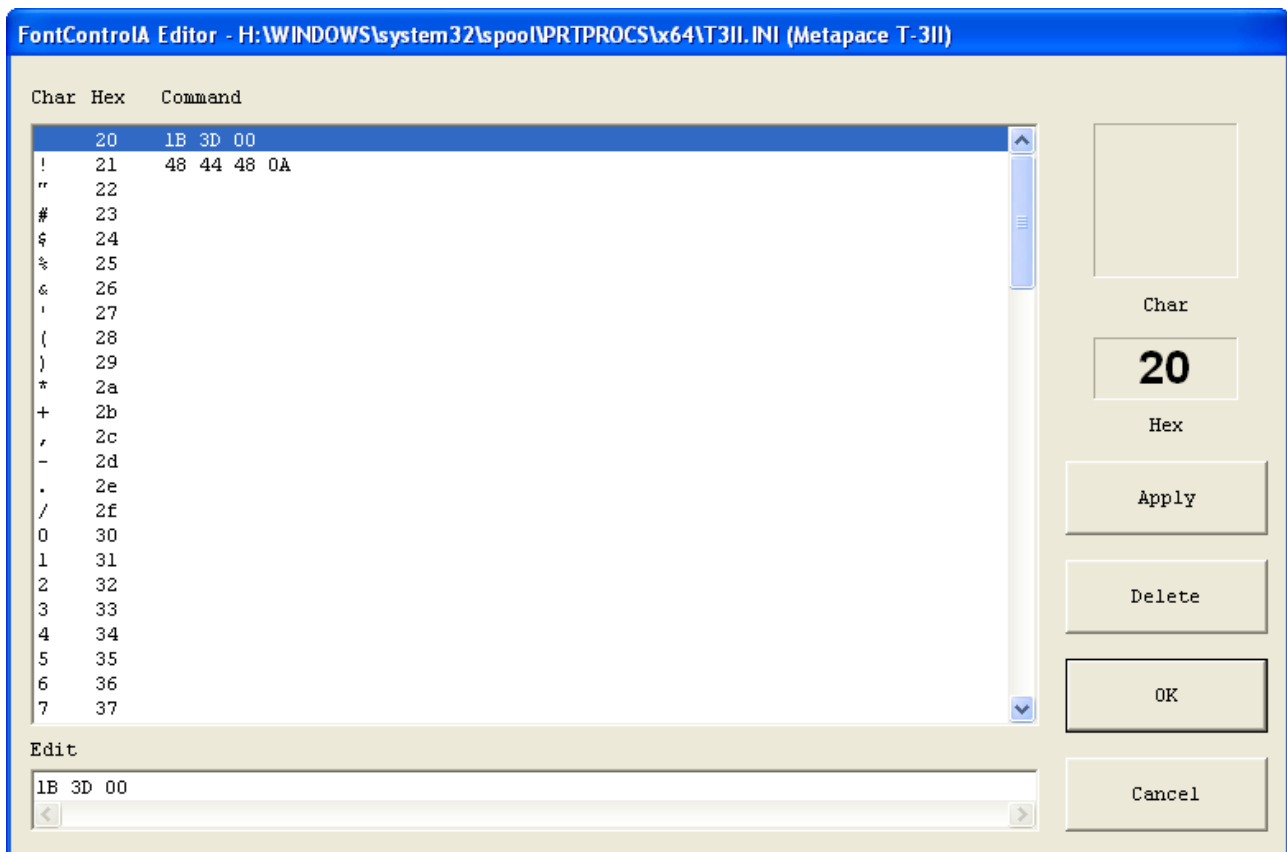
6-2-1 Using Special Font Edit Utility

“FontControlA” character function can be extended by using this utility. You can define new commands in T3II.ini file, and the “FontControlA” character can be changed to arbitrary user setting character. (Range of 0x20 to 0x7F)

1) Use the “Special Font Utility” in the “Utility” tab to edit the INI file.



2) First, specify print commands in “Edit” field. he click “Apply” and then click “OK” to save the data to INI file.



3) Click “Apply” and then “OK” to save the custom commands to the .INI file.

7. Windows Driver Application

7-1 Application with Visual Basic

This section contains example codes to control the printer (Metapace T-3II) using Windows driver with Visual Basic.

Sample codes shown here are copied to the installation directory when installing the Windows driver for your reference.

7-1-1 Windows driver selection

The following example code explains how to select the “Metapace T-3II” Windows driver.

```
For Each prnPrinter In Printers
    If prnPrinter.DeviceName = "Metapace T-3II" Then
        Set Printer = prnPrinter
    Exit For
End If
Next
```

7-1-2 Text printing

The following code is an example of the printing of Arial Test via the Windows font, and FontA1x1Test via the printer font.

```
'Print in Windows font
Printer.FontSize = 9
Printer.FontName = "Arial"
Printer.Print "Arial Test"

'Print in printer font
Printer.FontSize = 9.5
Printer.FontName = "FontA1x1"
Printer.Print "FontA1x1Test"

Printer.EndDoc
```

7-1-3 Barcode printing

The following example code explains how to print the barcode (JAN8 (EAN)).

```
'Print Bar Code.
Printer.FontSize = 20

Printer.FontName = "JAN8 (EAN)"
Printer.Print "1234567"

Printer.EndDoc
```

7-1-4 2-D barcode printing

The following example code explains how to print the 2-D barcode (PDF417).

```
'Print Two-dimensional Codes.
Printer.FontSize = 9.5

Printer.FontName = "PDF417"
Printer.Print "Print Test PDF417"

Printer.EndDoc
```

7-2 Application with WordPad

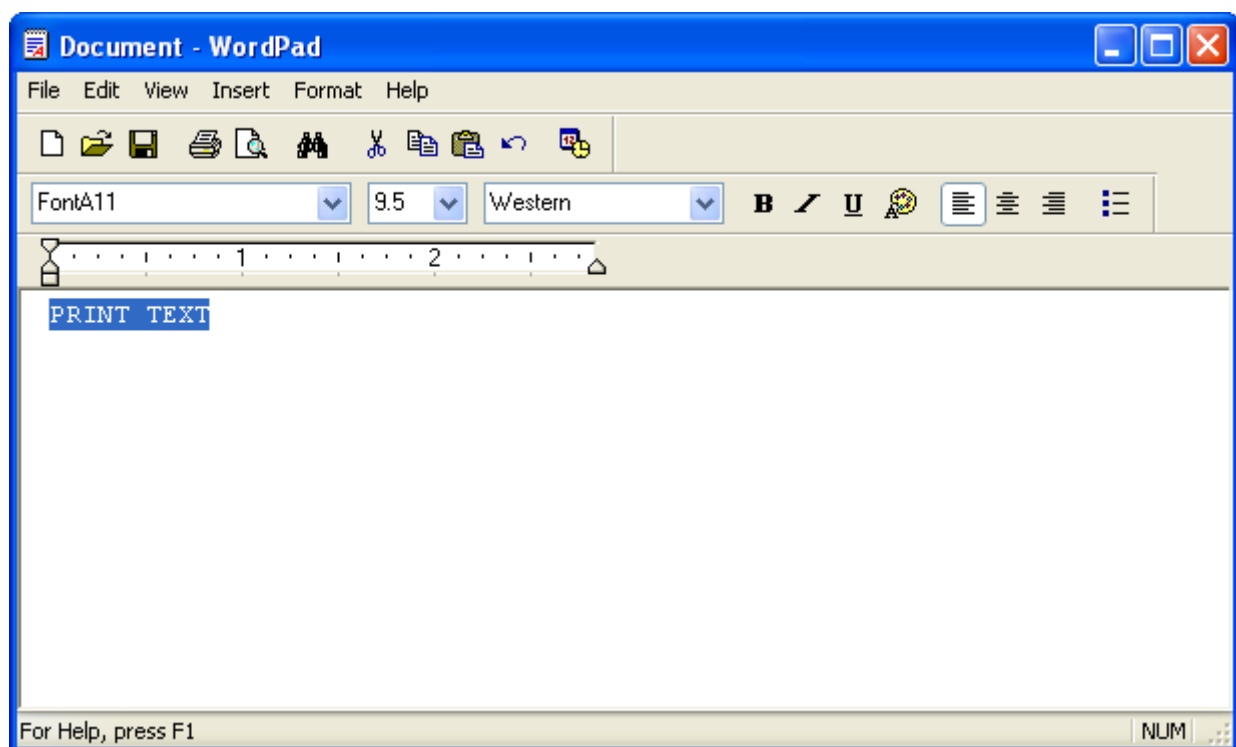
7-2-1 WordPad environment setting

Launch WordPad, set the printing related options as follows, and test the printer with WordPad.

- Select printer
Select "Print" from the "File" menu, and select the printer (Metapace T-3II).
- Set paper size, orientation, margin, etc.
Select the "Page Setting" from "File" menu, and set paper size, orientation, and margin.

7-2-2 Text printing

Print the text from WordPad using the Windows driver of the printer.



- 1) Select the font from the font selection box (FontA1x1).
- 2) Select the point size from the point selection box (9.5).
- 3) Enter the text to print.
- 4) Click the Print icon in the toolbar to print the text.